

GLACIER CRYSTAL

Glacier Crystal, also referred to as engineered crystal, earns its name from its crystal-clear transparency and the luid light it resembles. The inventor meticulously modifies and incorporates natural elements. These sophisticated design processes ensure the stability, reliability, and high quality of Glacier Crystal products, granting them attributes such as remarkable transparency, resistance to discoloration, and utmost safety.



Melting Brass Handicraft

Melting Brass Handicraft involves allowing copper to flow freely in a designated space after melting it at a high temperature of 1200 degrees Celsius. Following the cooling and solidification phase, the material undergoes meticulous processes such as hammering, welding, grinding, and polishing to transform into a distinctive work of art. This creative journey vividly captures the artist's ideas, infusing the artwork with vibrant energy and individuality.





Iron Forging Handicraft

Iron Forging Handicraft is an ancient and exquisite craft. It involves heating metal materials to a certain temperature and then using hammering, pressing, and other methods to make the metal more flexible, dense, and aesthetically pleasing. This process enhances the strength, durability, and

PRODUCTION PROCESS



CLAY PROTOTYPE

1



PLASTER MODEL

2



SILICON MOLD

3



INITIAL MODEL

4



ROUGH POLISH

5



WATER POLISH

6



BURNISH

7

PRODUCTS

ART

Artist IP co-
branded artwork
and artist
residence

LUXE

High-value, high-
quality

CASA

A stylish home
with design and
taste

PRODUCT CARE GUIDELINES Glacier crystal/Lucite Acrylic

Daily Care

To maintain the transparency and clarity regular cleaning is necessary. Use a soft cloth or fabric to wipe off the dust normally. Glacier crystal and Lucite is a high-temperature resistant product which can withstand high temperature and thus it can be used for seating or dining for the normal scenarios. Do not use any cleaning agents that contain granular objects as this will scratch the surface. Avoid contact with corrosive chemicals such as strong acids liquid, strong alkalis liquid, ethyl alcohol, gasoline, and etc. To avoid man-made damage, it is important to note that glacier crystal and Lucite acrylic is relative fragile to strong impact. Therefore, it is important to take precautions against weight contact, falls, and collisions to prevent any resulting cracks or other damages. During transportation, it is essential to ensure that protective measures are taken for the outer packing to prevent any product damage caused by turbulence. During the unpacking procedure, shall be careful not to use a knife to cut the packaging forcefully. When handling crystal products, it is recommended to wear soft cotton gloves to prevent contamination from the oils on our hands.

Other considerations

Safety accessible materials are as follows: All of iodine solution, dishwashing detergent, beer, 45% Liquor, wine, liquid soap, and tea shall cause no cracking reaction. Rinse with clean water and it will be alright. The following items may cause both materials to crack: Alcohol, bleach, and thinner will cause the cracking reactions. Moreover, the thinner will cause the most severely corrosive reaction and the most severe cracking











-CHAIRS-





FURRY CHAIR

GCH007a

Size:

L:710*W:670*H:650mm

Material:

Big Bear Cream Faux Fur+Brass

The product is very versatile, using transparent Glacier crystal as the frame material, supplemented by gray or white fur, which can be placed in various color environments without obtrusiveness.

The product is very affinity, the combination of transparent Glacier crystal and fur shows lightness and warmth, and is also very fashionable.

The product is also very practical, and the newly upgraded soft bag and cushion are comfortable to sit.



FURRY CHAIR

GCH007b

Size:

L:710*W:670*H:650mm

Material:

Big Bear Grey Faux Fur+Brass

The product is very versatile, using transparent Glacier crystal as the frame material, supplemented by gray or white fur, which can be placed in various color environments without obtrusiveness.

The product is very affinity, the combination of transparent Glacier crystal and fur shows lightness and warmth, and is also very fashionable.

The product is also very practical, and the newly upgraded soft bag and cushion are comfortable to sit.



DRIPPING WATER CHAIR

(MAPLE LEAVES)

GCH011

Size:

L540*W540*H720mm

Material:

Glacier Crystal

"Water Fuses with Chairs, Leaves Merge with Water.

Amidst the hustle and bustle of the city, here lies a haven of absolute purity.

Within this natural space, vibrant greenery and the sparkling play of light open up endless avenues for design. Classic lines, transparent aesthetics, and the enduring presence of leafy forms convey a transparent, ethereal design language, imparting a philosophy of life that embodies composure and tranquility.



CHINESE CLASSICAL SQUARE INCENSE STAND

GCT003

Size:

L:350*W:350*H:1060mm

Material:

Glacier Crystal

This product is inspired by the ancient painting "Listening to the Qin" from the Song Dynasty (currently housed in the Beijing Palace Museum). The design integrates modern design styles and usage habits while retaining the foundational structure, providing a contemporary and versatile application. The use of Glacier Crystal infuses the piece with a fresh vitality while radiating the charm of ancient aesthetics.



GREEN SEAT CUSHION

GPI001

Size:

L:450*W:500*H:40mm

Material:

Leather



BODEGA DINNING CHAIR

GCH001

Size:

L490*W630*H906mm

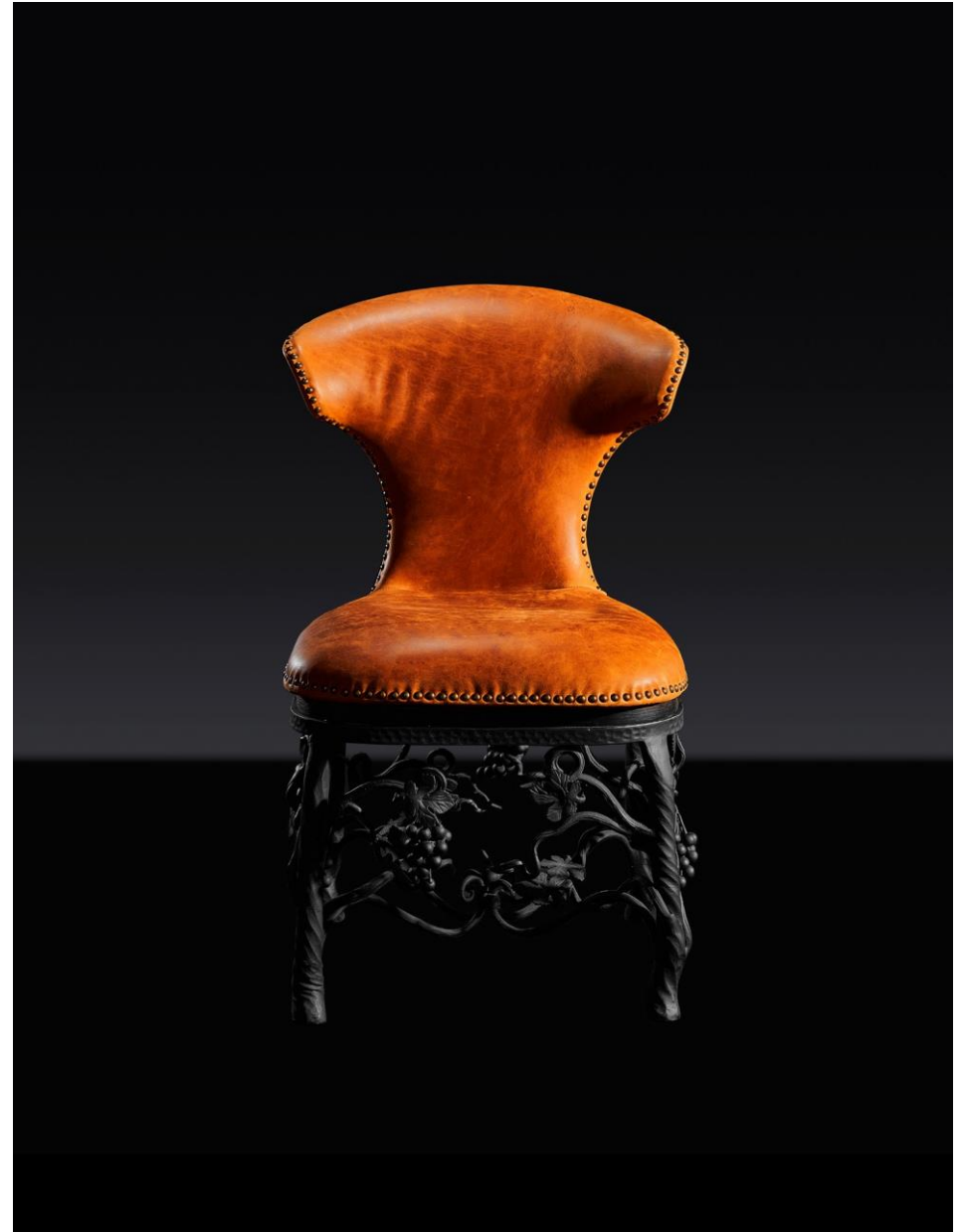
Material:

Iron+Cowhide

Wine culture has a long history, combining traditional European culture and local characteristics.

Forging is a primitive and ancient method, and the furniture presented by different forging and percussion forces is also unique.

Wrought iron and Artificial crystals symbolize the combination of tradition and modernity, and grape leaves and vines are placed on the countertops to make home life more artistic.



DEER SCULPTURE ART CHAIR

GCH002a

Size:

L:585*W:603*H:1040mm seat width : 408mm seat depth:413mm

Material:

Glacier Crystal+Leather

The chair is based on a Rococo style antique chair. This style of furniture flourished in the 30s of the 18th century, emphasizing beautiful art decoration and smooth curved shapes, and is one of the milestones in the history of furniture art.

Artist Cai Zhisong was invited to artistically treat the chair shape, incorporating the representative deer elements in his works, and casting them in Artificial crystals, supplemented by fur soft bags, which is of great artistic and collectible value.



DEER SCULPTURE ART CHAIR

GCH002b

Size:

L:585*W:603*H:1040mm seat width : 408mm seat depth:413mm

Material:

Glacier Crystal+Leather

The chair is based on a Rococo style antique chair. This style of furniture flourished in the 30s of the 18th century, emphasizing beautiful art decoration and smooth curved shapes, and is one of the milestones in the history of furniture art.

Artist Cai Zhisong was invited to artistically treat the chair shape, incorporating the representative deer elements in his works, and casting them in Artificial crystals, supplemented by fur soft bags, which is of great artistic and collectible value.



SCOTCH ART CHAIR

GCH003a

Size:

L : 490*W : 570*H : 1230mmseat width : 470mm seat depth:440mm

Material:

Glacier Crystal+Fabric (TWEED)

The prototype chair is now in the V&A Museum in the United Kingdom and was the type of chair that was popular in Scotland at the end of the 17th century. The back of the chair is carved with a large number of Scottish national flowers, the thistle, symbolizing courage and protection, which has great cultural and historical significance.

The chair is based on classic Baroque furniture, with luxurious and romantic artistic atmosphere underneath its intricate carved details.

On the basis of the prototype reproduction, the chair is cast in Artificial crystal, achieving the collision of classical and modern art.



SCOTCH ART CHAIR

GCH003b

Size:

L : 490*W : 570*H : 1230mmseat width : 470mm seatdepth:440mm

Material:

Glacier Crystal+Leather

The prototype chair is now in the V&A Museum in the United Kingdom and was the type of chair that was popular in Scotland at the end of the 17th century. The back of the chair is carved with a large number of Scottish national flowers, the thistle, symbolizing courage and protection, which has great cultural and historical significance.

The chair is based on classic Baroque furniture, with luxurious and romantic artistic atmosphere underneath its intricate carved details.

On the basis of the prototype reproduction, the chair is cast in Artificial crystal, achieving the collision of classical and modern art.



CLASSIC PARIS ART CHAIR

GCH004a

Size:

L : 600*W : 589* H : 1036mmseat width : 460mm seat depth:433mm

Material:

Glacier Crystal+Leather

The chair is based on the 19th century Henry II style French antique chair, its shape is thick and dignified, the lines are smooth and rigorous, incorporating a large number of classical architectural and decorative elements, with typical Renaissance furniture style characteristics.

The chair is artistically reproduced with Artificial crystal, making the antique chair more modern aesthetic, with textured leather upholstery, achieving the fusion of classical and modern art styles.



CLASSIC PARIS ART CHAIR

GCH004b

Size:

L : 600W : 589*H : 1036mmseat width : 460mm seat depth:433mm

Material:

Glacier Crystal+Leather

The chair is based on the 19th century Henry II style French antique chair, its shape is thick and dignified, the lines are smooth and rigorous, incorporating a large number of classical architectural and decorative elements, with typical Renaissance furniture style characteristics.

The chair is artistically reproduced with Artificial crystal, making the antique chair more modern aesthetic, with textured leather upholstery, achieving the fusion of classical and modern art styles.



BAMBOO CHAIR

GCH005

Size:

L:570*W:580*H:970mm

Material:

Glacier Crystal+Leather

Bamboo is a representative symbol of traditional Chinese literati sentiments. The design of the bamboo joint chair draws inspiration from the traditional rose chair, originating from the Song Dynasty, and was highly favored by literati, hence its alias, the literary chair. It can be found in the works of artists such as Liu Songnian and Li Gonglin.

The bamboo shape is derived from the unique bamboo called "qiong zhu" in Yunnan.

The chair exhibits excellent compatibility, as its traditional form suits Eastern classical styles, and its transparent material allows it to blend with Western modern aesthetics.



BRANCH CHAIR

GCH008

Size:

820*780*H2160mm

Material:

Big Bear Sable Faux Fur+Brass

This high-back chair draws inspiration from the intertwined and overlapping forms of tree branches. The branches and vines extend from the bottom of the chair, transforming into the backrest and legs, with the organic beauty of life recreated through the use of copper casting.

The combination of the organic brass structure and the texture of the fur cushion creates a mysterious and elegant atmosphere.



BUTTERFLY ILLUSION CHAIR

GCH009a

Size:

700*700*H700mm

Material:

Big Bear Sable Faux Fur+Brass

The cultural concept is rich, and the inspiration for the shape is taken from the allusion of Zhuangzi Mengdie. With light butterfly wings transformed into the shape of a chairback, but cast in heavy brass,

The weight is reversed, and it is also illusion and reality.

Beautiful shape, organic shape brass and fur contrast, full of gorgeous nobility, highlighting the owner's life aesthetics.

The seat is both practical. Ergonomic and comfortable cushion.



BUTTERFLY ILLUSION CHAIR

GCH009b

Size:

700*700*H700mm

Material:

Big Bear Cream Faux Fur+Brass

The cultural concept is rich, and the inspiration for the shape is taken from the allusion of Zhuangzi Mengdie. With light butterfly wings transformed into the shape of a chairback, but cast in heavy brass,

The weight is reversed, and it is also illusion and reality.

Beautiful shape, organic shape brass and fur contrast, full of gorgeous nobility, highlighting the owner's life aesthetics.

The seat is both practical. Ergonomic and comfortable cushion.



BUTTERFLY ILLUSION DOUBLE CHAIR

GCH010

Size:

L:1904mm W:797mm H:649mm

Material:

Big Bear Sable Faux Fur+Brass

The cultural concept is rich, and the inspiration for the shape is taken from the allusion of Zhuangzi Mengdie. With light butterfly wings transformed into the shape of a chairback, but cast in heavy brass,

The weight is reversed, and it is also illusion and reality.

Beautiful shape, organic shape brass and black fur contrast, full of gorgeous nobility, highlighting the owner's life aesthetics.

The seat is both practical. Ergonomic and comfortable cushion.



BODEGA SINGLE SOFA

GSF001

Size:

L850*W900*H:900mm

Material:

Iron+Mongolia Cream Faux Fur

Wine culture has a long history, combining traditional European culture and local characteristics.

Wool is a luxurious, soft-touch faux fur fiber that is environmentally friendly and sustainably recycled.

Wrought iron can be designed in unique shapes to match with wool, adding a sense of decoration and artistic creativity."



BODEGA SINGLE SOFA

GSF001a

Size:

L850*W900*H:900mm

Material:

Iron+Mongolia Cream Faux Fur

Wine culture has a long history, combining traditional European culture and local characteristics.

Wool is a luxurious, soft-touch faux fur fiber that is environmentally friendly and sustainably recycled.

Wrought iron can be designed in unique shapes to match with wool, adding a sense of decoration and artistic creativity."



SPRAY LOUNGE CHAIR

BCH016

Size:

L1500*W1250*H1200mm

Material:

Glacier Crystal

In motion, flowing water highlights the relationship between existence and time. Time is fleeting. What if it can be static.

With the romantic mentality, we freeze time, being free and unfettered. Close to the vast nature, we enjoy views of mountains and rivers, returning to the spiritually rich world.



PERIPATETICISM LOUNGE

BCH017

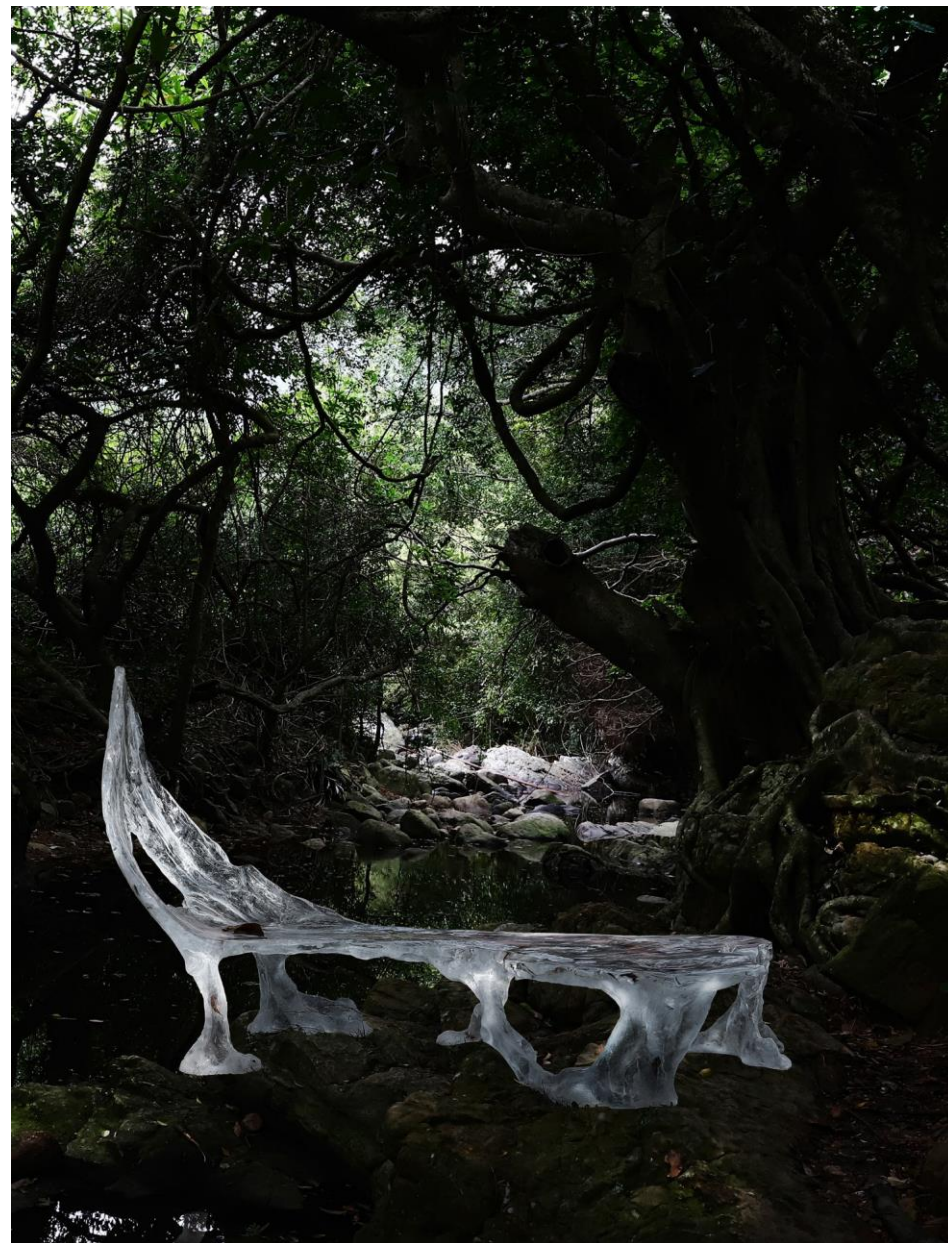
Size:

L2000*W860*H1160mm

Material:

Glacier Crystal

The ancients believed that a heart stained with impurities cannot comprehend the fundamental essence of all things. This series draws inspiration from nature, taking cues from materials such as stones, wood grain, and withered branches and leaves. Through the use of transparent materials as the medium, this series imbues these natural elements with new life, liberating the soul and pursuing a state of tranquil clarity and spiritual transcendence.



AQUATIC HERMIT CHAIR

(TRANSPARENT)

BCH001a

Size:

L540*W540*H720mm

Material:

Glacier Crystal

Water benefits everything by giving without taking or contending. That is humble virtue. The sea can lord it over all the streams flowing from the vales, for it takes a lower position, so water flows into it from hundreds of vales. Nothing in the world is softer and weaker than water. But nothing is better to win over the hard and the strong. That is soft virtue. The virtue of water is to avoid heights and go down. It can flow anywhere.

It can be in a deep pool, the surface of which is clear and calm, with the inside unfathomable. Water is like a Hermit, and so is man.



AQUATIC HERMIT CHAIR (BRANCH)

BCH001b

Size:

L540*W540*H720mm

Material:

Glacier Crystal

Water benefits everything by giving without taking or contending. That is humble virtue. The sea can lord it over all the streams flowing from the vales, for it takes a lower position, so water flows into it from hundreds of vales. Nothing in the world is softer and weaker than water. But nothing is better to win over the hard and the strong. That is soft virtue. The virtue of water is to avoid heights and go down. It can flow anywhere.

It can be in a deep pool, the surface of which is clear and calm, with the inside unfathomable. Water is like a Hermit, and so is man.



DRIPPING CHAIR (WITH SOLID WOOD)

BCH001c

Size:

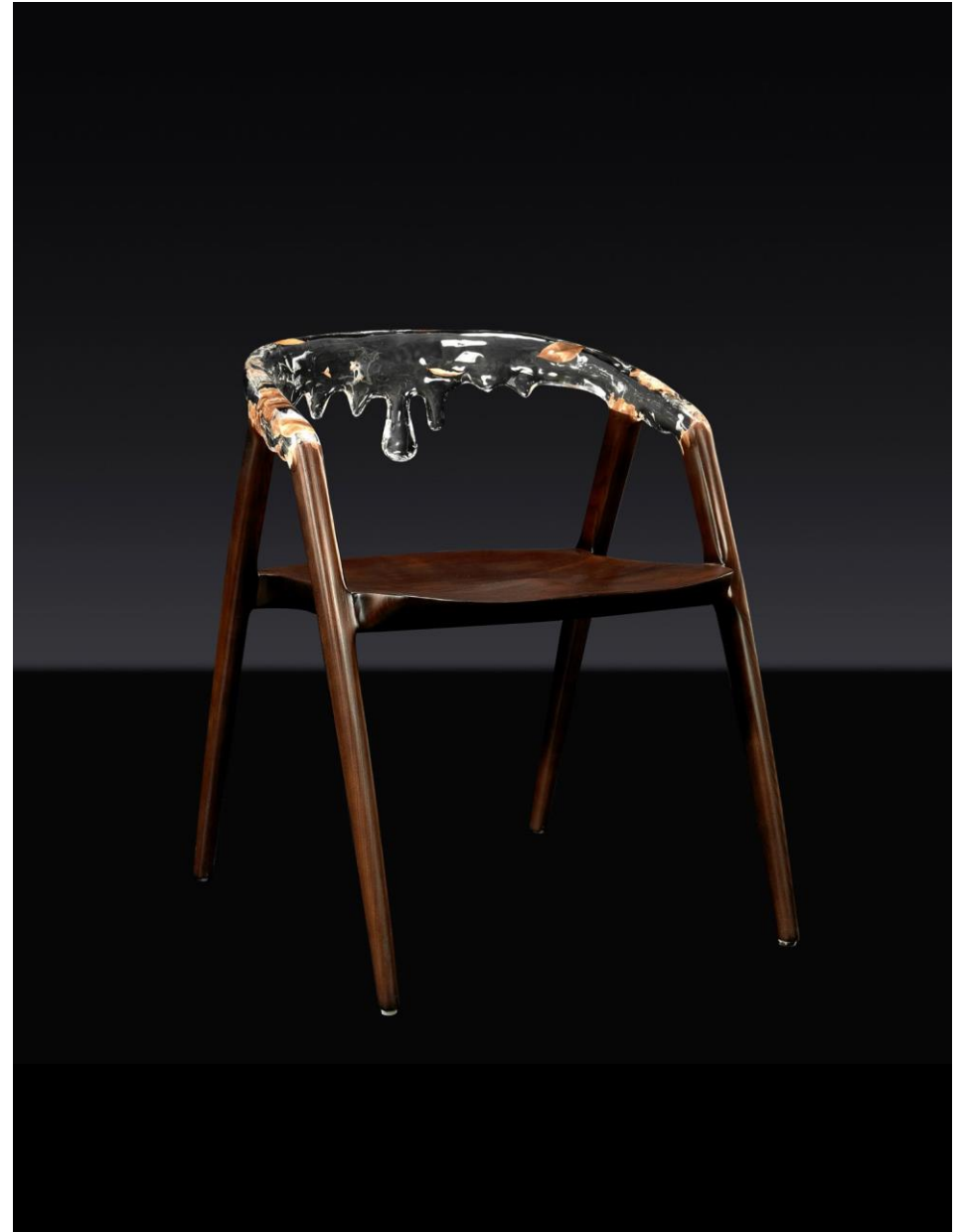
L550*W550*H740mm

Material:

Glacier Crystal

Nature and artists, colliding with the latest high-tech transparent material molding process, colliding with nature and artists, spark a neo-luxism.

Each piece of work is unique. Though seemingly unintentional, each decaying wood, each dead branch or even each leaf, is actually carefully selected by the artist as he goes deep into nature. Materials have gone through the baptism of time which left traces of its memory. Adhering to the spirit of the craftsman, the artist creates a series of creative home items through 28 steps of grinding, polishing and other complicated processes, making decaying wood, dead branches and leaves recover their respiration and glow with new life. Time seems to stand still, while life has been sublimated.



BRANCH ARMCHAIR

BCH002

Size:

L530*W630*H740mm

Material:

Glacier Crystal; Imported Leather

Nature is always neither dying nor being born, creating and deducing all things in a natural and endless way. Man comes from nature, but he will eventually return to it. Every tree and grass always gives us inexplicable movements.

In the hustle and bustle of the city, nature seems to be close yet distant . We need it, but it is always hard to get. "Fairy" with a familiar yet unacquainted face appears in front of us. She seems to be asking us to embrace nature and surprise ourselves. Perhaps loving nature and life is the meaning of life.



LANDSCAPE CHAIR (INK)

BCH003

Size:

L480*W480*H790mm

Material:

Glacier Crystal

One of the 3D ink wash series created by Wu Daijie, this work draws inspiration from the cultural prototypes of "Eastern Philosophy". With its unique approach and contemporary techniques, it emphasizes the relationship between contemporary art creation and the "present" or "reality", while highlighting the links between contemporary art creation and the "past" or "history". By controlling the free-form within a restricted range, it stimulates viewers to contemplate, creating a visual illusion that transcends the usual forms of visual representation and logical analysis...



IMPERIAL TUTOR CHAIR

(EBONY)

BCH004

Size:

L580*W440*H730mm

Material:

Glacier Crystal; Ebony

The Imperial Tutor Chair is the only chair named after the official position in ancient Chinese furniture. It was originally an official chair, a symbol of power and status.

By using contemporary technology to interpret tradition, we break through the shackles of traditional pure wood technology with different combinations of materials, and replace it with pure and transparent Glacier crystal. The artistic conception of ink painting is integrated into the chair body, and the ink rhyme is outlined in the transparent material, which contributes to "water halo and ink seal".

When a stone is thrown into the middle of the lake, a dizzy circle of water forms on the lake surface. The overall shape is smart and solemn.



WOOL ARMCHAIR

BCH005

Size:

L500*W650*H640mm

Material:

Glacier Crystal; Imported Wool

To promote a philosophy of loving nature and life and respecting artistic originality and uniqueness, we impart vitality to artworks, thus presenting a reborn version of nature.

Nature and artists, colliding with the latest high-tech transparent material molding process, colliding with nature and artists, spark a neo-luxism.

Each piece of work is unique. Though seemingly unintentional, each decaying wood, each dead branch or even each leaf, is actually carefully selected by the artist as he goes deep into nature. Materials have gone through the baptism of time which left traces of its memory. Adhering to the spirit of the craftsman, the artist creates a series of creative home items through 28 steps of grinding, polishing and other complicated processes, making decaying wood, dead branches and leaves recover their respiration and glow with new life. Time seems to stand still, while life has been sublimated.



HORN CHAIR (TRANSPARENT)

BCH006a

Size:

L550*W520*H750

Material:

Glacier Crystal

Nature and artists, colliding with the latest high-tech transparent material molding process, colliding with nature and artists, spark a neo-luxism.

Adhering to the spirit of the craftsman, the artist creates a series of creative home items through 28 steps of grinding, polishing and other complicated processes.



HORN CHAIR (LEAF)

BCH006b

Size:

L550*W520*H750

Material:

Glacier Crystal

Nature and artists, colliding with the latest high-tech transparent material molding process, colliding with nature and artists, spark a neo-luxism.

Adhering to the spirit of the craftsman, the artist creates a series of creative home items through 28 steps of grinding, polishing and other complicated processes.



DRIPPING CHAIR

BCH007

Size:

L530*W580*H760mm

Material:

Glacier Crystal; Imported Leather

Water benefits everything by giving without taking or contending. That is humble virtue. The sea can lord it over all the streams flowing from the vales, for it takes a lower position, so water flows into it from hundreds of vales. Nothing in the world is softer and weaker than water. But nothing is better to win over the hard and the strong. That is soft virtue. The virtue of water is to avoid heights and go down. It can flow anywhere.

It can be in a deep pool, the surface of which is clear and calm, with the inside unfathomable. Water is like a Hermit, and so is man.



BRANCHES LOW BACK CHAIR

BCH008

Size:

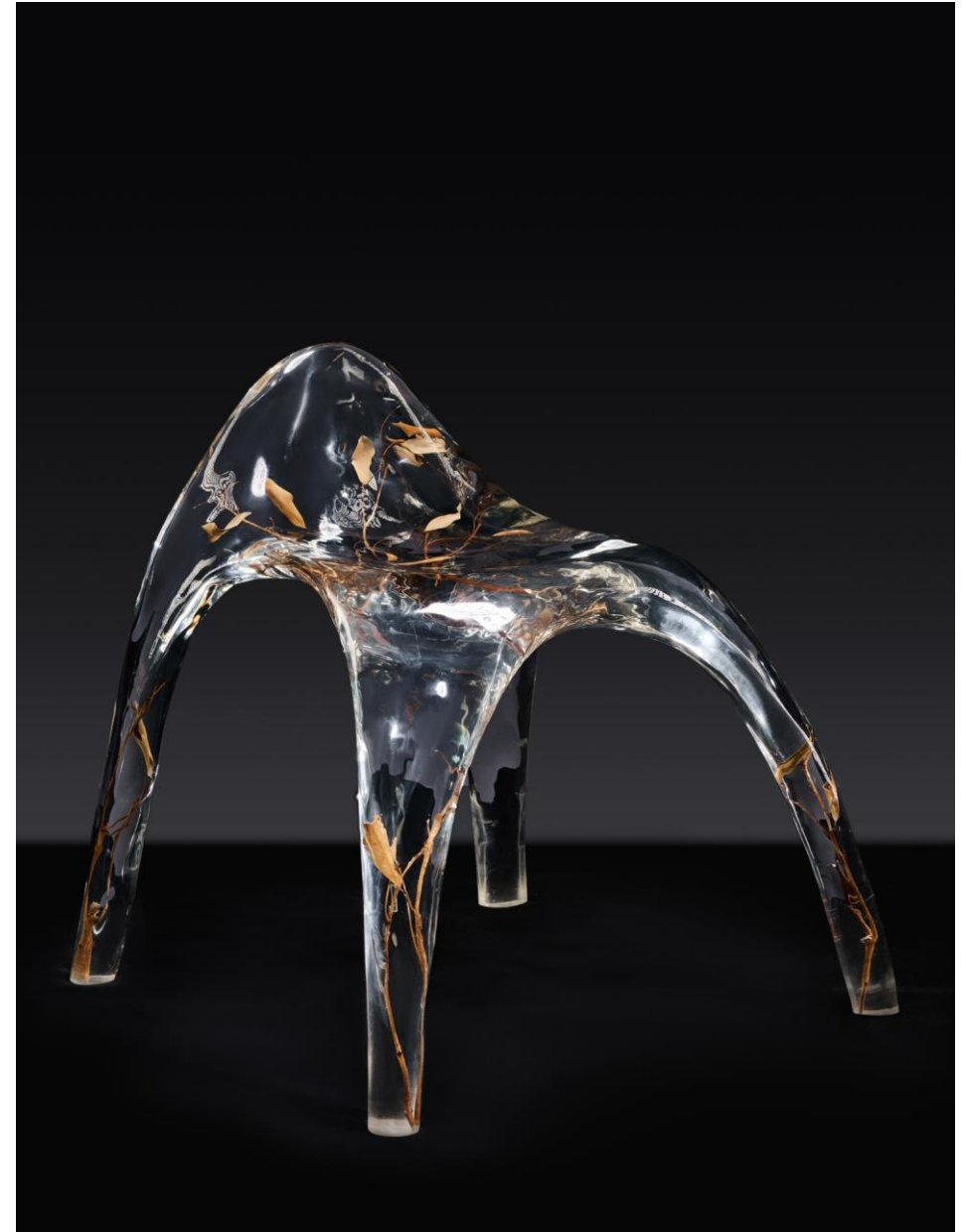
L570*W530*H615mm

Material:

Glacier Crystal

Nature and artists, colliding with the latest high-tech transparent material molding process, colliding with nature and artists, spark a neo-luxism.

Each piece of work is unique. Though seemingly unintentional, each decaying wood, each dead branch or even each leaf, is actually carefully selected by the artist as he goes deep into nature. Materials have gone through the baptism of time which left traces of its memory. Adhering to the spirit of the craftsman, the artist creates a series of creative home items through 28 steps of grinding, polishing and other complicated processes, making decaying wood, dead branches and leaves recover their respiration and glow with new life. Time seems to stand still, while life has been sublimated.



WING CHAIR

BCH009

Size:

L670*W650*H780mm

Material:

Glacier Crystal;Leather

Nature has always been a wellspring of inspiration for artists. takes various natural images, such as rocks, branches, mountains, and animals, and reinterprets them through the artist's profound understanding of nature.



STONE TEXTURE CHAIR

BCH010a

Size:

L570*W550*H800mm

Material:

Glacier Crystal

Nature is always neither dying nor being born, creating and deducing all things in a natural and endless way. Man comes from nature, but he will eventually return to it. Every tree and grass always gives us inexplicable movements.

In the hustle and bustle of the city, nature seems to be close yet distant . We need it, but it is always hard to get. "Fairy" with a familiar yet unacquainted face appears in front of us. She seems to be asking us to embrace nature and surprise ourselves. Perhaps loving nature and life is the meaning of life.



STONE TEXTURE CHAIR

(TRANSPARENT)

BCH010b

Size:

L570*W550*H800mm

Material:

Glacier Crystal

Nature is always neither dying nor being born, creating and deducing all things in a natural and endless way. Man comes from nature, but he will eventually return to it. Every tree and grass always gives us inexplicable movements.

In the hustle and bustle of the city, nature seems to be close yet distant . We need it, but it is always hard to get. "Fairy" with a familiar yet unacquainted face appears in front of us. She seems to be asking us to embrace nature and surprise ourselves. Perhaps loving nature and life is the meaning of life.



CHLOE CHAIR

BCH011

Size:

L660*W560*H780mm

Material:

Glacier Crystal

Nature is always neither dying nor being born, creating and deducing all things in a natural and endless way. Man comes from nature, but he will eventually return to it. Every tree and grass always gives us inexplicable movements.

In the hustle and bustle of the city, nature seems to be close yet distant . We need it, but it is always hard to get. "Fairy" with a familiar yet unacquainted face appears in front of us. She seems to be asking us to embrace nature and surprise ourselves. Perhaps loving nature and life is the meaning of life.



METEORIC WATER CHAIR

BCH012

Size:

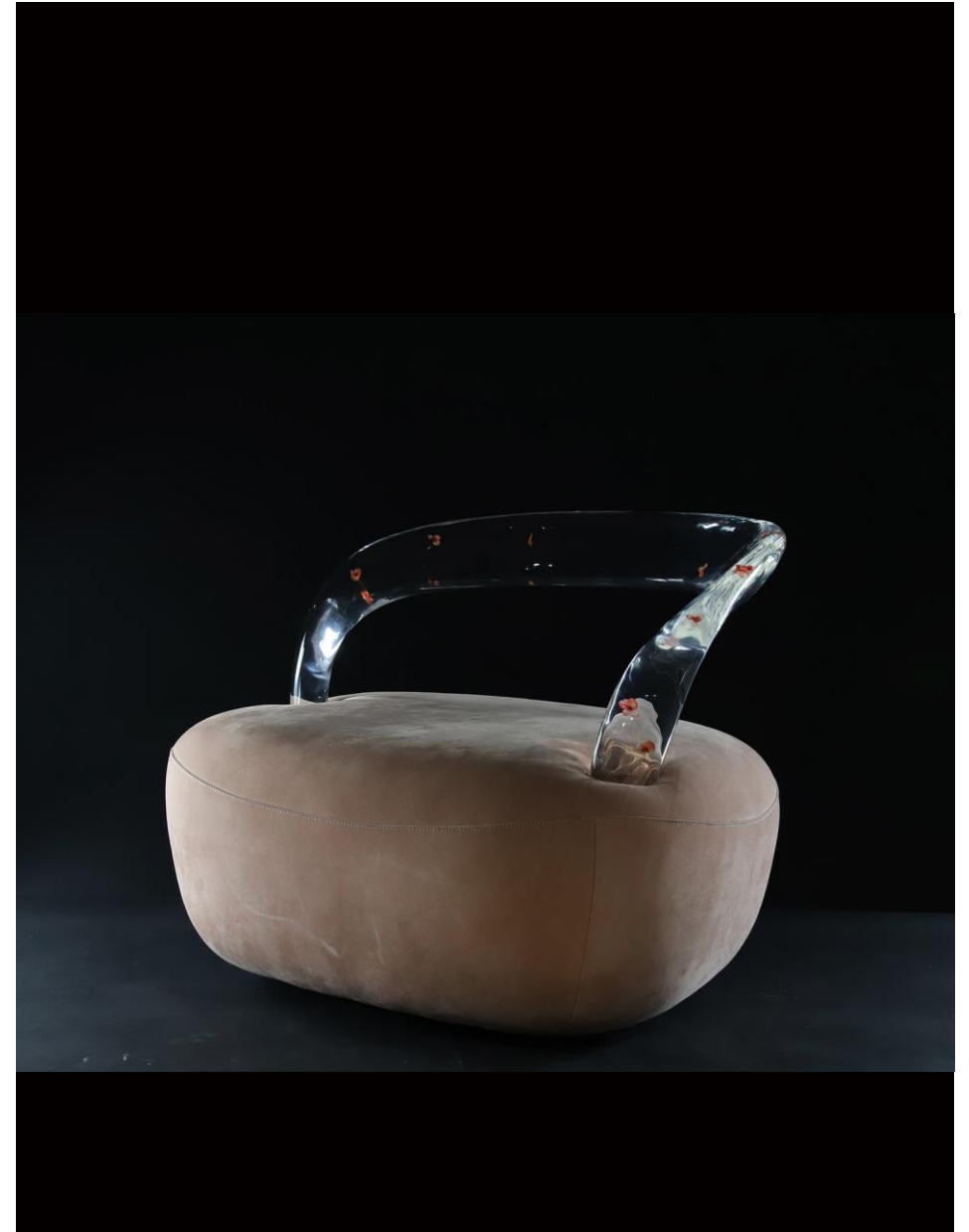
L700*W550*H480mm

Material:

Glacier Crystal;Leather

This series of works is inspired by "The House of Southern Tang" in "The History of Song Dynasty": Once, the concubine of Li Yu, the last emperor of Southern Tang, left some undyed silk and cotton outside overnight, and they became even more beautiful after being covered in dew. Later, everyone followed this method of dyeing and called this color "Meteoric Water".

Dipping the silk in a tub of water, the fabric reflects each other's images. The crystal clear purity is as beautiful as the Meteoric Water color dyed from night rain, and the petal's color is as stunning as the pink borrowed from the water surface, together creating an unexpected surprise. The implication is that sometimes, unexpected surprises can be obtained unintentionally, and a career can be accomplished unconsciously!



BULLISH CHAIR

BCH013a

Size:

L700*W700*H640mm

Material:

Glacier Crystal;Leather

The ox, as one of the 12 zodiac animals in traditional Chinese culture, embodies the fine qualities of the Chinese nation, such as diligence, perseverance, and a willingness to shoulder heavy burdens. China's totemic worship of oxen can be traced back 4,000 years, forming a profound traditional ox culture. Meanwhile, "mysterious power, wealth, and influence" are the essence of Western ox culture, making it a popular choice among those in the stock market, real estate, finance, banking, and other related fields.

Through the art of sculpture and the ox culture, combined with the transparent characteristics of the material, the artists at have created the "Bullish Chair" chair. This piece aims to showcase a sense of power, solidity, and stability, highlighting a confident demeanor while also suggesting prosperity, progress, and growth.



BULLISH CHAIR-COW LEATHER

BCH013b

Size:

L700*W700*H640mm

Material:

Glacier Crystal;Leather

The ox, as one of the 12 zodiac animals in traditional Chinese culture, embodies the fine qualities of the Chinese nation, such as diligence, perseverance, and a willingness to shoulder heavy burdens. China's totemic worship of oxen can be traced back 4,000 years, forming a profound traditional ox culture. Meanwhile, "mysterious power, wealth, and influence" are the essence of Western ox culture, making it a popular choice among those in the stock market, real estate, finance, banking, and other related fields.

Through the art of sculpture and the ox culture, combined with the transparent characteristics of the material, the artists at have created the "Bullish Chair" chair. This piece aims to showcase a sense of power, solidity, and stability, highlighting a confident demeanor while also suggesting prosperity, progress, and growth.



TENGENT LOUNGE CHAIR

BCH014

Size:

L710*W670*H650mm

Material:

Glacier Crystal;Abrazine Calfskin

Nature and artists, colliding with the latest high-tech transparent material molding process, colliding with nature and artists, spark a neo-luxism.

Each piece of work is unique. Though seemingly unintentional, each decaying wood, each dead branch or even each leaf, is actually carefully selected by the artist as he goes deep into nature. Materials have gone through the baptism of time which left traces of its memory. Adhering to the spirit of the craftsman, the artist creates a series of creative home items through 28 steps of grinding, polishing and other complicated processes, making decaying wood, dead branches and leaves recover their respiration and glow with new life. Time seems to stand still, while life has been sublimated.



TWINING LOUNGE CHAIR

BCH015

Size:

L740*W740*H780mm

Material:

Glacier Crystal;Press serpentine leather

The Free Flow series is a design inspired by the "deconstruction" theory proposed by philosophers such as Jacques Derrida and Nietzsche, which gives rise to a free-flowing form of design. It combines the features of deconstructive design: non-centered, non-sequential, fluid, non-binary, fragmented, and disorderly diversification. The Free Flow series expresses natural tension by not following classical axes and orders, but rather by extending irregularly. It establishes a new context, oriented towards the future, with a higher level of harmony and unity with the living environment.

The shapes of the series are full and rich in detail.

The composition structure of disorder, growth, and ambiguity is like a series of surprises and joys that are full of exploration and sudden enlightenment in life. It symbolizes our spirit of innovation and exploration, daring to break conventions and explore multidimensional thoughts.



POUF

GST001

Size:

Ø 400mm H:470mm

Material:

Iron+Mongolia Cream Faux Fur

Wine culture has a long history, combining traditional European culture and local characteristics.

Wool is a luxurious, soft-touch faux fur fiber that is environmentally friendly and sustainably recycled.

Wrought iron can be designed in unique shapes to match with wool, adding a sense of decoration and artistic creativity.



ANTLER STOOL

GST002

Size:

L:420*W:420*H:460mm

Material:

Glacier Crystal+Leather

Deer antlers are a symbol of power and strength in Chinese and Western art and culture, and also have the meaning of resisting strong enemies and promising futures.

Antler furniture was invented in the 19th century to decorate the hunting castles and manors of European aristocrats, reflecting family status.

This stool is modeled after an antique Western antler stool, and is reproduced in a modern artistic representation of Artificial crystal, supplemented by deerskin upholstery, inheriting the classic and incorporating a modern aesthetic.



PANDA STOOL

GST003

Size:

L:456*W:456*H:430mm

Material:

Glacier Crystal

The national treasure panda theme work is a representative work of Han Meilin's great cultural and commercial value.

The panda stool can be used for both purposes and can also be used as a side table.

The panda stool has an ingenious structure, with bamboo joints and relief panda overall shape, which is unique.



BRANCH STOOL

BST001

Size:

L300*W300*H350mm

Material:

Glacier Crystal

Nature and artists, colliding with the latest high-tech transparent material molding process, colliding with nature and artists, spark a neo-luxism.

Each piece of work is unique. Though seemingly unintentional, each decaying wood, each dead branch or even each leaf, is actually carefully selected by the artist as he goes deep into nature. Materials have gone through the baptism of time which left traces of its memory. Adhering to the spirit of the craftsman, the artist creates a series of creative home items through 28 steps of grinding, polishing and other complicated processes, making decaying wood, dead branches and leaves recover their respiration and glow with new life. Time seems to stand still, while life has been sublimated.



WOODEN ROUND STOOL

BST002

Size:

L300*W300*H350mm

Material:

Glacier Crystal; Wood

Nature and artists, colliding with the latest high-tech transparent material molding process, colliding with nature and artists, spark a neo-luxism.

Each piece of work is unique. Though seemingly unintentional, each decaying wood, each dead branch or even each leaf, is actually carefully selected by the artist as he goes deep into nature. Materials have gone through the baptism of time which left traces of its memory. Adhering to the spirit of the craftsman, the artist creates a series of creative home items through 28 steps of grinding, polishing and other complicated processes, making decaying wood, dead branches and leaves recover their respiration and glow with new life. Time seems to stand still, while life has been sublimated.



DRUM STOOL

BST003

Size:

L350*W350*H400mm

Material:

Glacier Crystal

Artistic drum stool breaks the square with the round line, empty in the arch stool body in a pure, elegant, and peaceful way.

It inherits a classical and natural atmosphere with contemporary design.



WOODEN SQUARE STOOL I

BST004

Size:

L300*W300*H400mm

Material:

Glacier Crystal; Wood

Nature and artists, colliding with the latest high-tech transparent material molding process, colliding with nature and artists, spark a neo-luxism.

Each piece of work is unique. Though seemingly unintentional, each decaying wood, each dead branch or even each leaf, is actually carefully selected by the artist as he goes deep into nature. Materials have gone through the baptism of time which left traces of its memory. Adhering to the spirit of the craftsman, the artist creates a series of creative home items through 28 steps of grinding, polishing and other complicated processes, making decaying wood, dead branches and leaves recover their respiration and glow with new life. Time seems to stand still, while life has been sublimated.



WOODEN SQUARE STOOL III

BST005

Size:

L280*W290*H350mm

Material:

Glacier Crystal; Wood

Nature and artists, colliding with the latest high-tech transparent material molding process, colliding with nature and artists, spark a neo-luxism.

Each piece of work is unique. Though seemingly unintentional, each decaying wood, each dead branch or even each leaf, is actually carefully selected by the artist as he goes deep into nature. Materials have gone through the baptism of time which left traces of its memory. Adhering to the spirit of the craftsman, the artist creates a series of creative home items through 28 steps of grinding, polishing and other complicated processes, making decaying wood, dead branches and leaves recover their respiration and glow with new life. Time seems to stand still, while life has been sublimated.



WOODEN SQUARE STOOL II

BST006

Size:

L300*W300*H400mm

Material:

Glacier Crystal; Wood

Nature and artists, colliding with the latest high-tech transparent material molding process, colliding with nature and artists, spark a neo-luxism.

Each piece of work is unique. Though seemingly unintentional, each decaying wood, each dead branch or even each leaf, is actually carefully selected by the artist as he goes deep into nature. Materials have gone through the baptism of time which left traces of its memory. Adhering to the spirit of the craftsman, the artist creates a series of creative home items through 28 steps of grinding, polishing and other complicated processes, making decaying wood, dead branches and leaves recover their respiration and glow with new life. Time seems to stand still, while life has been sublimated.



BRANCH SQUARE STOOL

BST007

Size:

L280*W290*H390mm

Material:

Glacier Crystal

Nature and artists, colliding with the latest high-tech transparent material molding process, colliding with nature and artists, spark a neo-luxism.

Each piece of work is unique. Though seemingly unintentional, each decaying wood, each dead branch or even each leaf, is actually carefully selected by the artist as he goes deep into nature. Materials have gone through the baptism of time which left traces of its memory. Adhering to the spirit of the craftsman, the artist creates a series of creative home items through 28 steps of grinding, polishing and other complicated processes, making decaying wood, dead branches and leaves recover their respiration and glow with new life. Time seems to stand still, while life has been sublimated.



SYMBIOSIS STOOL (L)

BST008

Size:

L670*W550*H540mm

Material:

Glacier Crystal

In motion, flowing water highlights the relationship between existence and time. Time is fleeting. What if it can be static?

With the romantic mentality, we freeze time, being free and unfettered. Close to the vast nature, we enjoy views of mountains and rivers, returning to the spiritually rich world.



ARTISTIC FLOW STOOL

BST009

Size:

L290*W290*H1700mm

Material:

Glacier Crystal

In motion, flowing water highlights the relationship between existence and time. Time is fleeting. What if it can be static?

With the romantic mentality, we freeze time, being free and unfettered. Close to the vast nature, we enjoy views of mountains and rivers, returning to the spiritually rich world.



SQUARE DRUM STOOL

BST012

Size:

L280*W280*H400mm

Material:

Glacier Crystal

The drum plays an important role in the instrument, it plays the mainstay of a piece of music, the role of controlling the rhythm, this product combines the shape of the drum with the square stool, taking the positive forward and continuous progress of the drum.



TWINING BARSTOOL

BST014

Size:

L460*W460*H770mm

Material:

Glacier Crystal

This collection of works is full of form and detail. The combination of disorder, growth, grace, and uncertainty is like countless surprises with exploration in a life full of joy. It symbolizes the pioneering and innovative spirit that we do not follow the routine, dares to explore and do not follow the rules and multi-dimensional thinking.



BODEGA BAR STOOL

GST004

Size:

L:460*W:460*H:750mm

Material:

Iron+Leather

Wine culture has a long history, combining traditional European culture and local characteristics.

Forging is a primitive and ancient method, and the furniture presented by different forging and percussion forces is also unique.

Old cowhide has a classic texture, and the combination of the two adds decorative and artistic value to the furniture.



BODEGA BENCH

GST005

Size:

L:1450*W:420*H:420mm

Material:

Iron+Leather

Wine culture has a long history, combining traditional European culture and local characteristics.

Forging is a primitive and ancient method, and the furniture presented by different forging and percussion forces is also unique.

Old cowhide has a classic texture, and the combination of the two adds decorative and artistic value to the furniture.



LINGLONG TABLE

(LARGE LIMITED EDITION)

BTA004b

Size:

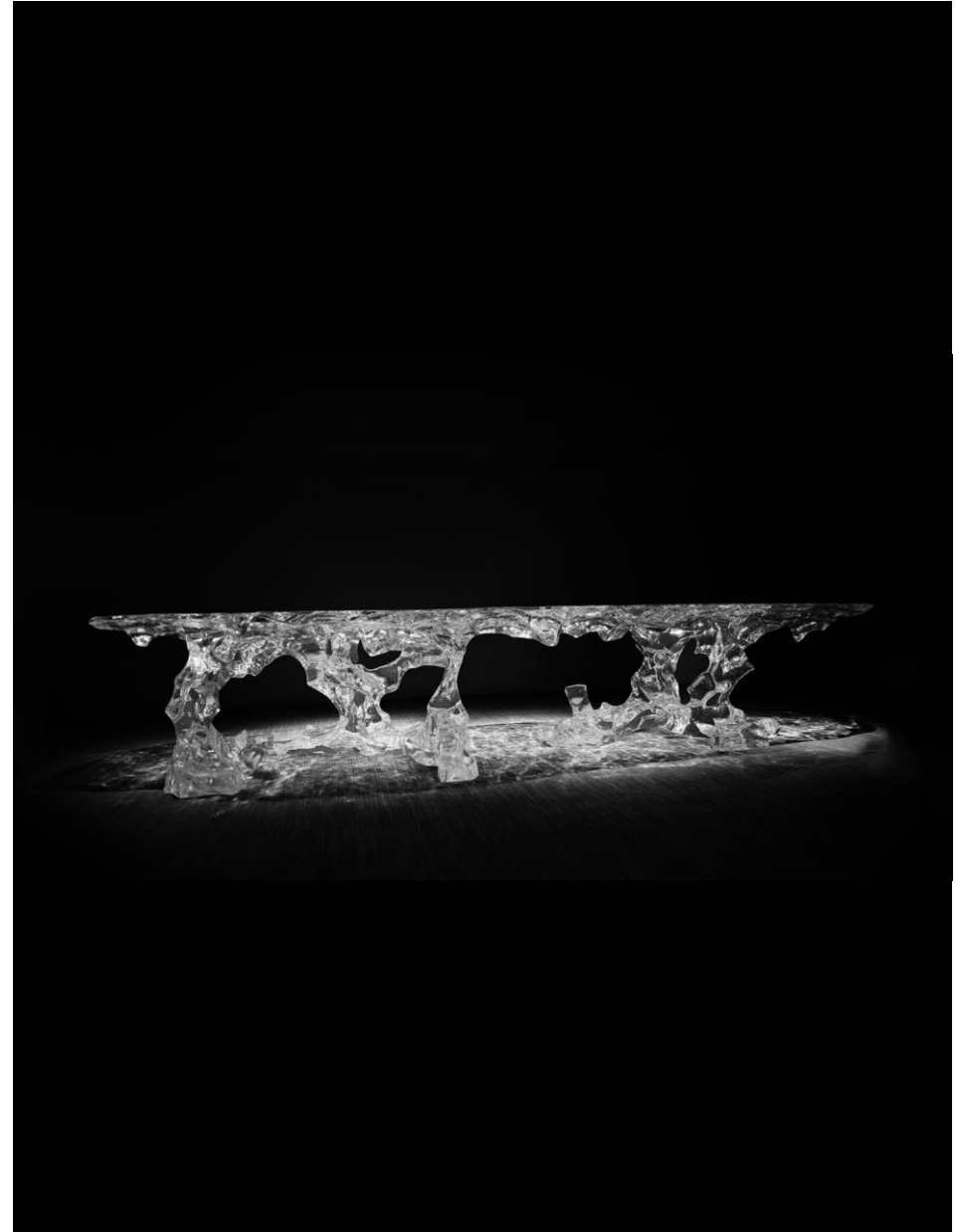
L4200*W1400*H750mm

Material:

Glacier Crystal

There has always been a cultural tradition of stone appreciation in China, which is a unique cultural accumulation of Chinese genes.

We hope to re-examine this exquisitely carved Taihu stone and take traditional culture colliding with contemporary art as a dialogue across time and space between ancient and modern times, and remind impetuous contemporary people to find their own humanistic spirit in Chinese traditional culture and philosophy. The works adopt a form of composition, that is, the combination of science and technology and art, traditional skills and contemporary craft, traditional culture and contemporary language, presenting the cultural traditions accumulated by Chinese culture in a new form.



-TABLES-

HEAVEN AND EARTH

BTA005

Size:

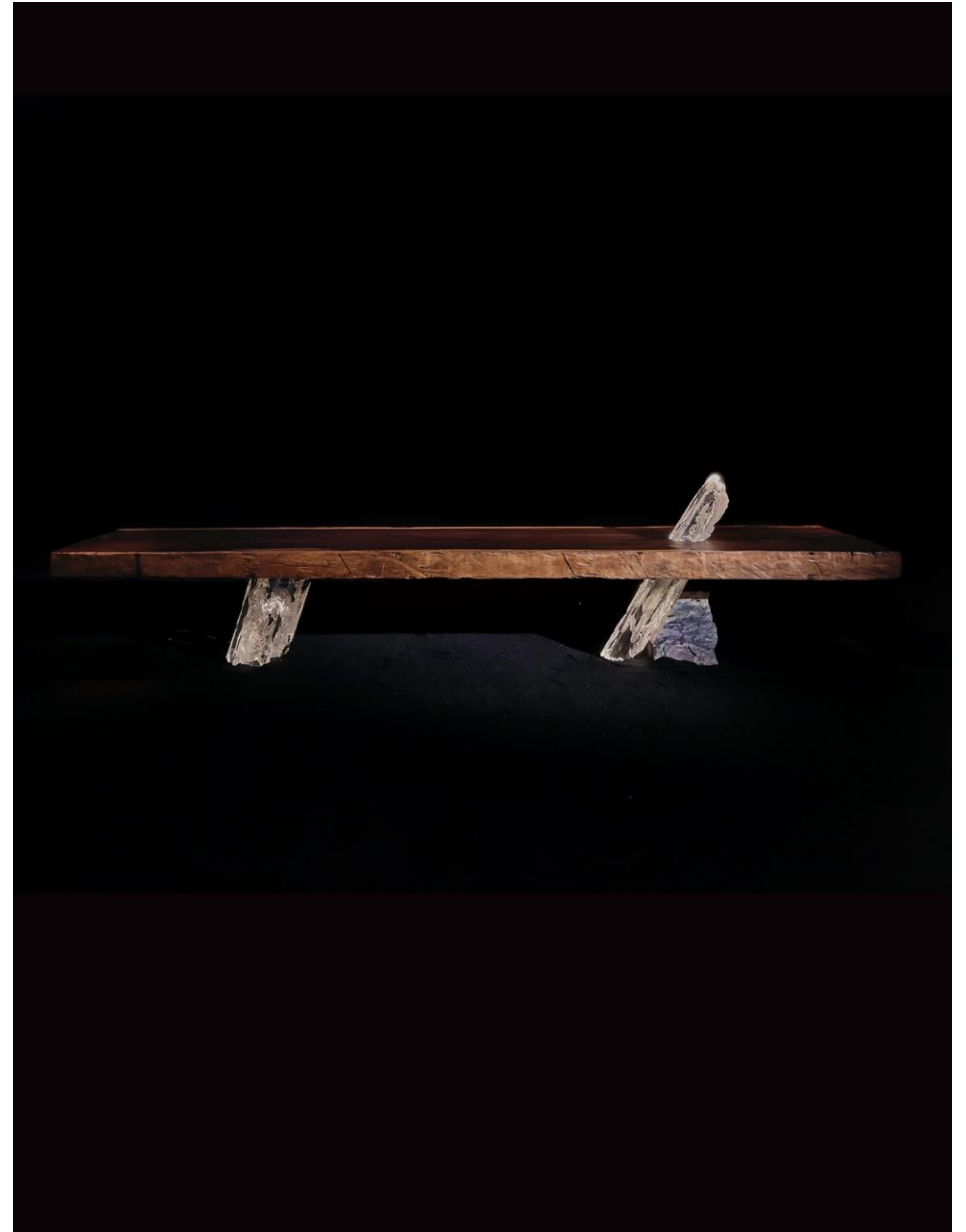
L3120*W960*H700mm

Material:

Glacier Crystal; Ebony

With respect and reverence for nature, seek the energy balance of unity between heaven and humanity.

The organic fusion of old sandalwood, crystal pillars, and bluestone has created this unique work full of strong power. Here are our childhood emotional memories, and we also hope to convey a human concept of harmonious coexistence with nature and culture



BAR TABLE

BTA012

Size:

L2250*W890*H850mm

Material:

Glacier Crystal

The inspiration comes from a sandstone stone in the mountains of Xiangxi in the artist's memory, which preserves the joy of the artist's childhood. I hope that through artistic creation, these emotional memories can be forever preserved and presented in a unique way, feeling the passage of time and the changes in life, and cherishing those beautiful moments of the past



CONTEMPLATING BENCH

BCH018

Size:

L1580*W700*H980mm

Material:

Glacier Crystal

Contemplation is a state of being. As Tang Dynasty poet Wang Wei wrote in his poem *In Response to My Guests' Visit*: "Contemplating the fish, gazing down at the white sand." And as Song Dynasty scholar Cheng Hao wrote in his poem *Occasionally Composed on an Autumn Day*: "In contemplation of all things, one finds inner peace and pleasure, and in every season, one shares the joys of life with others." This work, with its natural and Tai Chi-like textures, expresses an expansive attitude toward life, one that involves observing and contemplating all things in nature with calmness and serenity.



MABLE DINING TABLE

BTA001

Size:

L2400*W900*H700mm

Material:

Glacier Crystal

Nature and artists, colliding with the latest high-tech transparent material molding process, colliding with nature and artists, spark a neo-luxism.

Each piece of work is unique. Though seemingly unintentional, each decaying wood, each dead branch or even each leaf, is actually carefully selected by the artist as he goes deep into nature. Materials have gone through the baptism of time which left traces of its memory. Adhering to the spirit of the craftsman, the artist creates a series of creative home items through 28 steps of grinding, polishing and other complicated processes, making decaying wood, dead branches and leaves recover their respiration and glow with new life. Time seems to stand still, while life has been sublimated.



BAMBOO TABLE

GTA002

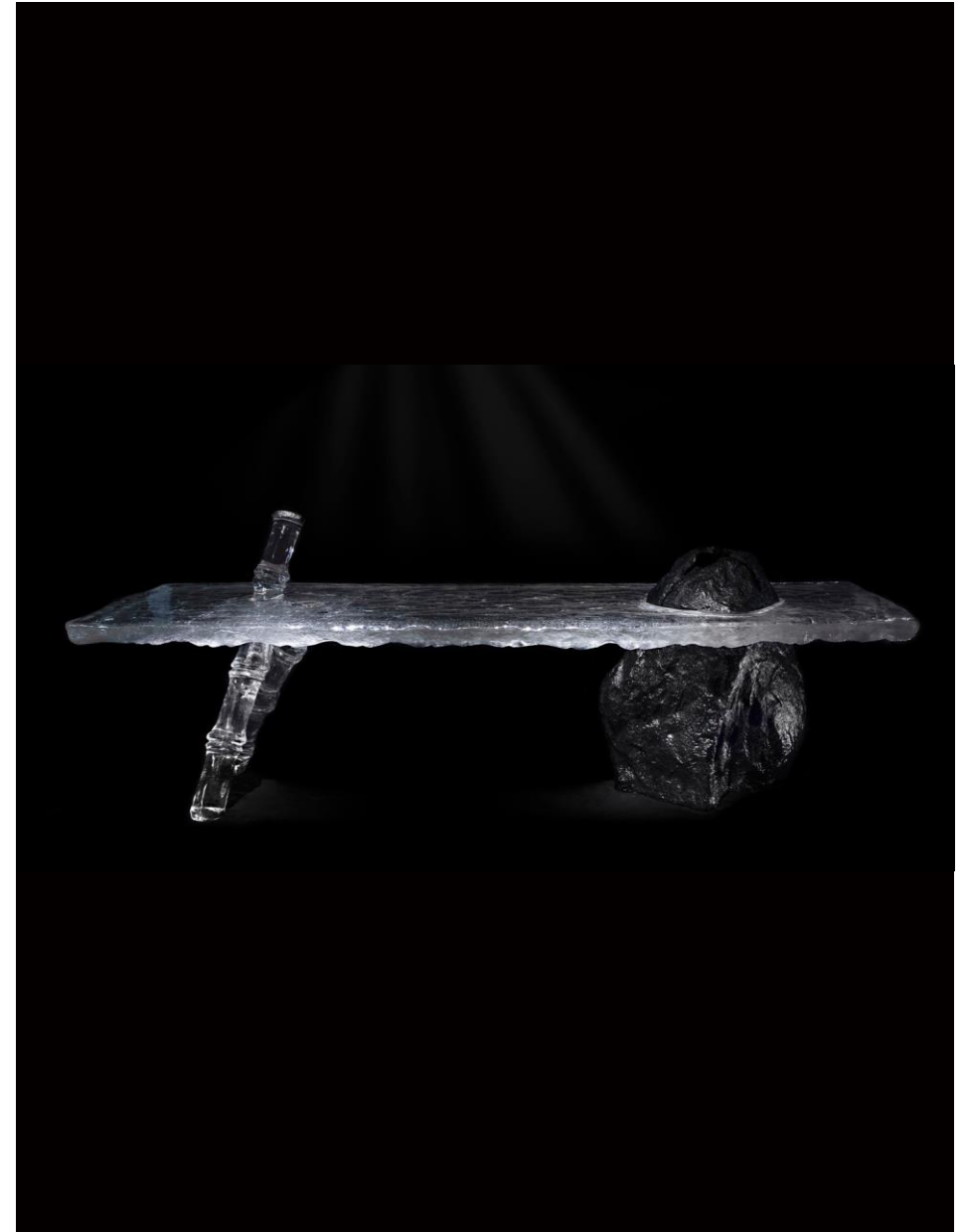
Size:

L:2800*W:900*H:980mm

Material:

Glacier Crystal

Bamboo, is a representative symbol of traditional Chinese literati sentiments. The long table, known for its strong practicality, has a tabletop height of 72cm, serving both as an executive office desk and a tea table, providing dual functionality. Incorporating plants as part of furniture adds vitality to the space, displaying ingenuity while embodying the pastoral sentiments of traditional Eastern culture.



BODEGA SIDE TABLE

GCT001

Size:

∅ 450*H:500

Material:

Glacier Crystal+Iron

Wine culture has a long history, combining traditional European culture and local characteristics.

Forging is a primitive and ancient method, and the furniture presented by different forging and percussion forces is also unique.

Wrought iron and Artificial crystals symbolize the combination of tradition and modernity, and grape leaves and vines are placed on the countertops to make home life more artistic.



ENGLISH DEER SIDE TABLE

GCT002

Size:

L:455*W:455*H:600mm

Material:

Glacier Crystal

Inspired by classic antique English side tables, the leg shape incorporates Chippondale-style curves, with elegant curves and delicate relief decorations.

Artist Cai Zhisong was invited to artistically process the prototype on the basis of the prototype, incorporating his representative deer sculpture elements into the legs and countertops, and the whole is made of Artificial crystal, making the classical side table more modern aesthetic.



BODEGA ROUND COFFEE TABLE

GTA003

Size:

∅ 1000*H750h

Material:

Glacier Crystal+Iron

Wine culture has a long history, combining traditional European culture and local characteristics.

Forging is a primitive and ancient method, and the furniture presented by different forging and percussion forces is also unique.

Wrought iron and Artificial crystals symbolize the combination of tradition and modernity, and grape leaves and vines are placed on the countertops to make home life more artistic.



BODEGA ROUND COFFEE TABLE

GTA003a

Size:

Ø 1200mm H:800mm

Material:

Glacier Crystal+Iron

Wine culture has a long history, combining traditional European culture and local characteristics.

Forging is a primitive and ancient method, and the furniture presented by different forging and percussion forces is also unique.

Wrought iron and Artificial crystals symbolize the combination of tradition and modernity, and grape leaves and vines are placed on the countertops to make home life more artistic.



BODEGA BAR TABLE

GTA004

Size:

Ø 600*H1100

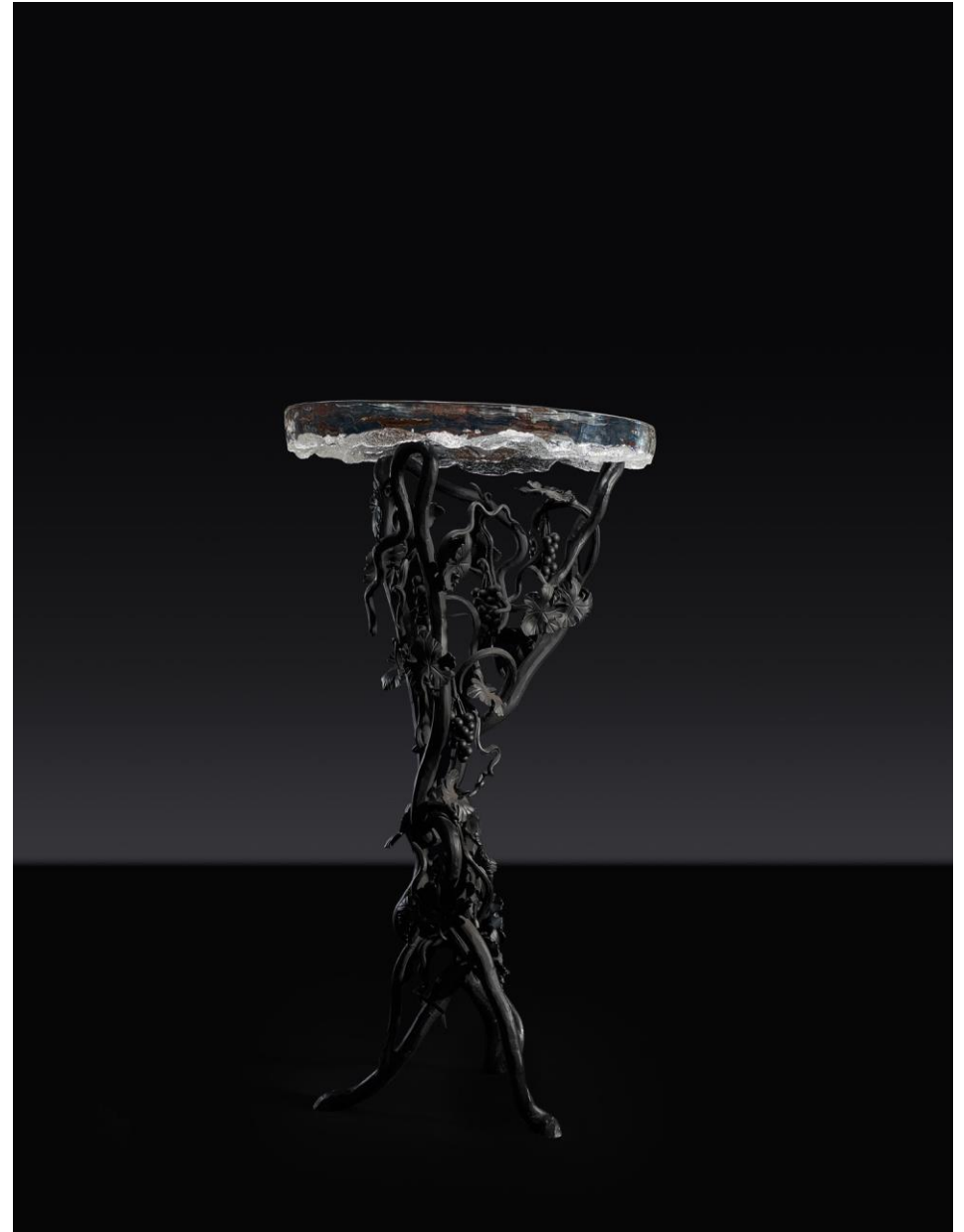
Material:

Glacier Crystal+Iron

Wine culture has a long history, combining traditional European culture and local characteristics.

Forging is a primitive and ancient method, and the furniture presented by different forging and percussion forces is also unique.

Wrought iron and Artificial crystals symbolize the combination of tradition and modernity, and grape leaves and vines are placed on the countertops to make home life more artistic.



BODEGA CONSOLE

GCS001

Size:

L1600*W380*H800mm

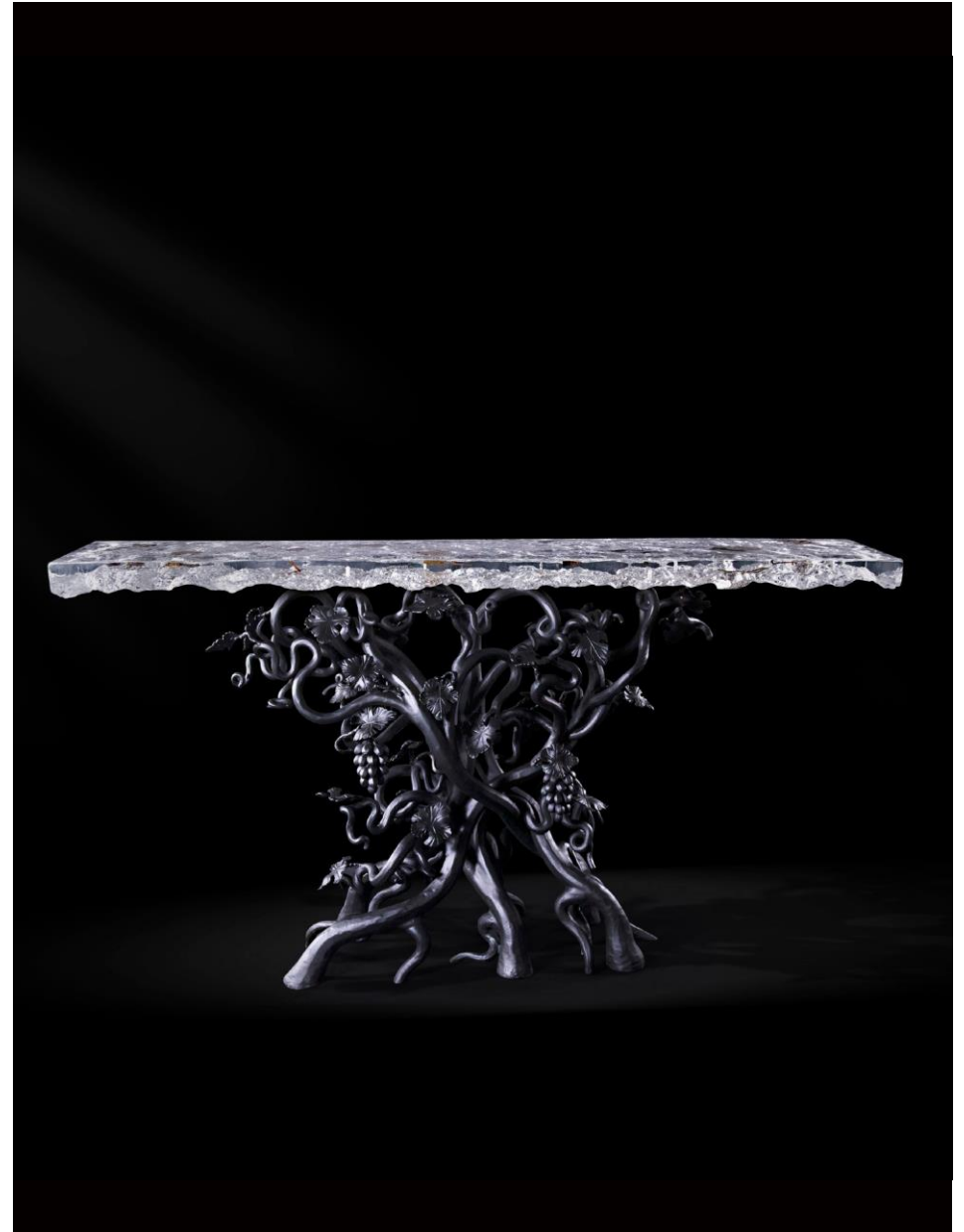
Material:

Glacier Crystal+Iron

Wine culture has a long history, combining traditional European culture and local characteristics.

Forging is a primitive and ancient method, and the furniture presented by different forging and percussion forces is also unique.

Wrought iron and Artificial crystals symbolize the combination of tradition and modernity, and grape leaves and vines are placed on the countertops to make home life more artistic.



JADE BRANCH LONG TABLE

BTA002a

Size:

L2300*W900*H740mm

Material:

Glacier Crystal; Walnut

The seemingly irregular twisted branches of the tree itself embody a kind of beauty, which, through the designer's shaping and the fusion with transparent materials, breaks through the traditional style of horizontal and vertical table legs, appearing more sturdy and beautiful.



DOUBLE PEAK DINING TABLE

BTA003

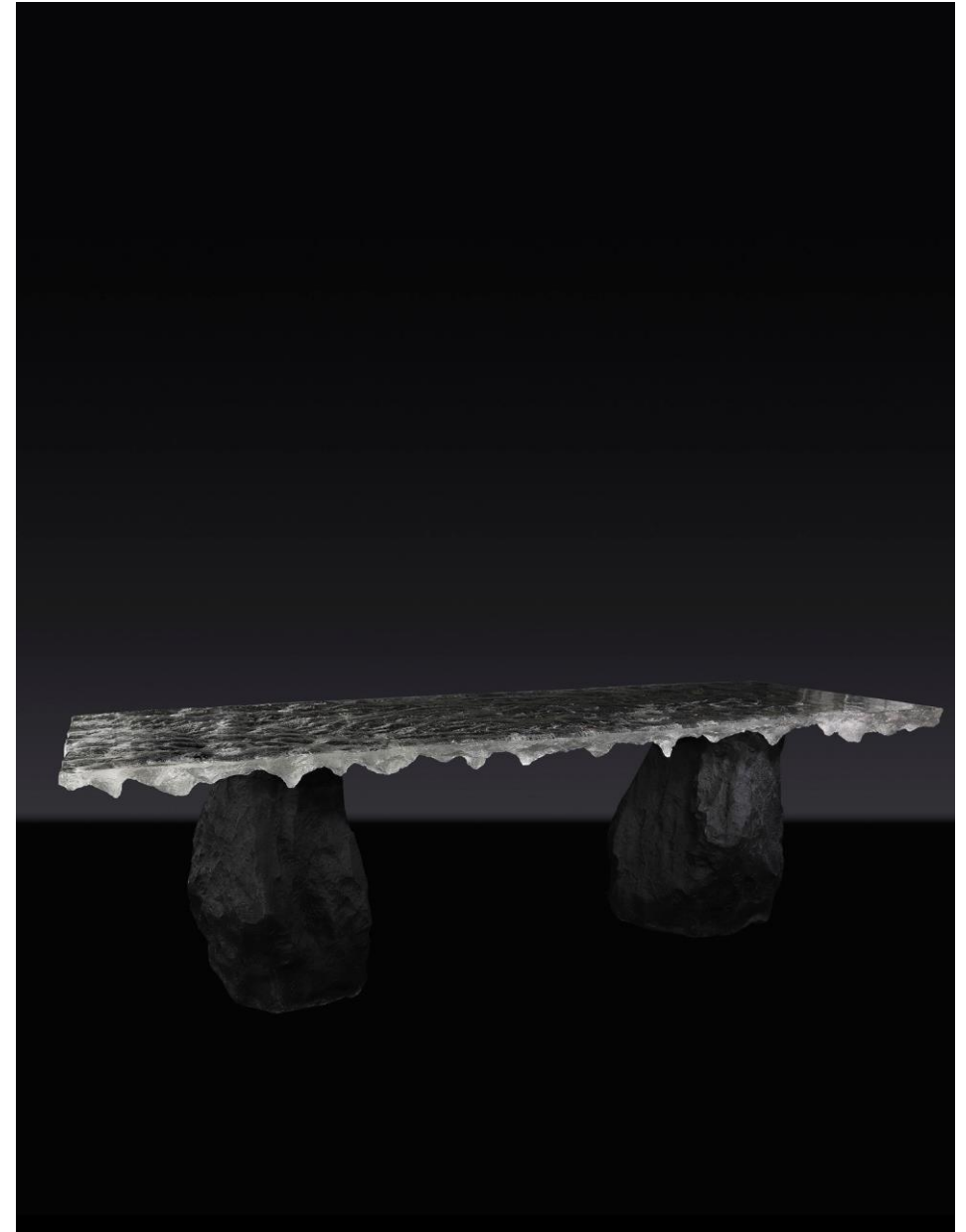
Size:

L2800*W880*H760mm

Material:

Glacier Crystal

The work "Symphony of Crystal and Stone" draws its creative inspiration from the various stones that emerge from the surface of a small stream. These stones are so ordinary and commonplace, yet upon closer inspection, they possess a profound poetic quality, as if the stones have shattered the tranquillity of the water's surface, yet remain in perfect harmony. This artwork is supported by stones and adorned with a transparent crystal tabletop, symbolizing the masculine strength of the stones, which sustains the gentle and tender surface of the water, akin to a woman. Together, they form a symbiotic relationship in art, where their fusion is both commonplace and unexpectedly surprising, embodying the cultural essence of "art deriving from life, surpassing life." The work seems to embody the Zen concept of "emptiness and tranquillity." Here, transient and fleeting elements are absent, replaced by the eternal presence in solidified time, where only the enduring essence of stone and water remains.



VORTEX ROUND TABLE I

BTA006

Size:

L1000*W1000*H600mm

Material:

Glacier Crystal

Nature and artists, colliding with the latest high-tech transparent material molding process, colliding with nature and artists, spark a neo-luxism.

Each piece of work is unique. Though seemingly unintentional, each decaying wood, each dead branch or even each leaf, is actually carefully selected by the artist as he goes deep into nature. Materials have gone through the baptism of time which left traces of its memory. Adhering to the spirit of the craftsman, the artist creates a series of creative home items through 28 steps of grinding, polishing and other complicated processes, making decaying wood, dead branches and leaves recover their respiration and glow with new life. Time seems to stand still, while life has been sublimated.



VORTEX ROUND TABLE II

BTA007

Size:

L1000*W1000*H710mm

Material:

Glacier Crystal

Nature and artists, colliding with the latest high-tech transparent material molding process, colliding with nature and artists, spark a neo-luxism.

Each piece of work is unique. Though seemingly unintentional, each decaying wood, each dead branch or even each leaf, is actually carefully selected by the artist as he goes deep into nature. Materials have gone through the baptism of time which left traces of its memory. Adhering to the spirit of the craftsman, the artist creates a series of creative home items through 28 steps of grinding, polishing and other complicated processes, making decaying wood, dead branches and leaves recover their respiration and glow with new life. Time seems to stand still, while life has been sublimated.



TREE ROOT DINING TABLE

BTA008

Size:

L1500*W1500*H710mm

Material:

Glacier Crystal; Ebony

With respect and reverence for nature, seek the energy balance of unity between heaven and humanity.

The organic fusion of sandalwood, and crystal has created this unique work full of strong power. We also hope to convey a human concept of harmonious coexistence with nature and culture



BLACK STONE ROUND DINING TABLE

BTA009

Size:

L1500*W1500*H750mm

Material:

Glacier Crystal; Marble

Combining the most primitive stones from nature with modern Glacier crystals, the art space of this light luxury restaurant presents a wonderful interpretation in both visual effect and overall texture, as the two complement each other perfectly.



RIPPLE MOSAIC TEA TABLE

BTA010

Size:

L1750*W1750*H740mm

Material:

Glacier Crystal

The collection was inspired by nature's common water vortices, which are spirals formed when water meets low places. The vortex symbolizes danger and unpredictability, and is often intimidating, creating fear associations.

The product solidifies time through artistic creation, captures the instantaneous image of the vortex, weakens the negative side of danger signals, and utilizes the transparent property of the material to form a wonderful experience of vision and actual touch, giving people a beautiful association.

The common vortex of water in life is refined into successful works of art, such as a variety of tables, chairs, small stools and others, so that art takes on a high level of affinity. The secret of the vortex is that simple.

Water means wealth in traditional Chinese culture. Whirlpool symbolizes the accumulation of wealth, so the products boast artistic beauty and auspicious meaning as well.



RIPPLE TEA TABLE

(SINGLE)

BTA010a

Size:

L1130*W700*H740mm

Material:

Glacier Crystal

The collection was inspired by nature's common water vortices, which are spirals formed when water meets low places. The vortex symbolizes danger and unpredictability, and is often intimidating, creating fear associations.

The product solidifies time through artistic creation, captures the instantaneous image of the vortex, weakens the negative side of danger signals, and utilizes the transparent property of the material to form a wonderful experience of vision and actual touch, giving people a beautiful association.

The common vortex of water in life is refined into successful works of art, such as a variety of tables, chairs, small stools and others, so that art takes on a high level of affinity. The secret of the vortex is that simple.

Water means wealth in traditional Chinese culture. Whirlpool symbolizes the accumulation of wealth, so the products boast artistic beauty and auspicious meaning as well.



VORTEX ROUND BAR TABLE

BTA011

Size:

L600*W600*H1100mm

Material:

Glacier Crystal

The collection was inspired by nature's common water vortices, which are spirals formed when water meets low places. The vortex symbolizes danger and unpredictability, and is often intimidating, creating fear associations.

The product solidifies time through artistic creation, captures the instantaneous image of the vortex, weakens the negative side of danger signals, and utilizes the transparent property of the material to form a wonderful experience of vision and actual touch, giving people a beautiful association.

The common vortex of water in life is refined into successful works of art, such as a variety of tables, chairs, small stools and others, so that art takes on a high level of affinity. The secret of the vortex is that simple.

Water means wealth in traditional Chinese culture. Whirlpool symbolizes the accumulation of wealth, so the products boast artistic beauty and auspicious meaning as well.



CONSOLE

BTA014

Size:

L1180*W340*H800mm

Material:

Glacier Crystal

Each piece of work is unique. Though seemingly unintentional, each decaying wood, each dead branch or even each leaf, is actually carefully selected by the artist as he goes deep into nature. Materials have gone through the baptism of time which left traces of its memory. Adhering to the spirit of the craftsman, the artist creates a series of creative home items through 28 steps of grinding, polishing and other complicated processes, making decaying wood, dead branches and leaves recover their respiration and glow with new life. Time seems to stand still, while life has been sublimated.



CLOUDEASE CONSOLE

BTA015

Size:

L1280*W400*H800mm

Material:

Glacier Crystal

The entrance hall, as an exquisite and mystical mechanism, is closely related to feng shui and fortune. It symbolizes auspiciousness, and the gathering of qi to bring wealth. Drawing inspiration from classical traditional furniture, the artist has created a contemporary interpretation by combining highly refined artistic techniques with modern language. This represents a reinterpretation of traditional culture through contemporary art.



CLOUD SCROLL CONSOLE

BTA016

Size:

L1560*W420*H800mm

Material:

Glacier Crystal

The entrance hall, as an exquisite and mystical mechanism, is closely related to feng shui and fortune. It symbolizes auspiciousness, and the gathering of qi to bring wealth. Drawing inspiration from classical traditional furniture, the artist has created a contemporary interpretation by combining highly refined artistic techniques with modern language. This represents a reinterpretation of traditional culture through contemporary art.



WINDLESS CONSOLE

BTA017

Size:

L1500*W450*H750mm

Material:

Glacier Crystal

Maintaining balance with one leg, exuding composure and grandeur, it presents a minimalist and luxurious design that is suitable for various occasions. The crystal-like material is warm and delicate, combining practicality with ornamental value, adding a touch of artistry to any space.



JADE BRANCH COSOLE

BTA018

Size:

L1200*W300*H1020mm

Material:

Glacier Crystal; Ebony

The seemingly irregular twisted branches of the tree itself embody a kind of beauty, which, through the designer's shaping and the fusion with transparent materials, breaks through the traditional style of horizontal and vertical table legs, appearing more sturdy and beautiful.



SOULMATE GUQIN TABLE

BTA019

Size:

L1120*W380*H680mm

Material:

Glacier Crystal

"When the heart is pure, the sound of the qin is pure; when the heart is distant, the meaning of the qin is distant". Filter out the worldly distractions, follow the heart's lead, and like the meeting of a mountain stream with a soulmate, find harmony in music.



RIPPLE ARTISTIC SIDE TABLE

BCT001

Size:

L470*W470*H550mm

Material:

Glacier Crystal

The collection was inspired by nature's common water vortices, which are spirals formed when water meets low places. The vortex symbolizes danger and unpredictability, and is often intimidating, creating fear associations.

The product solidifies time through artistic creation, captures the instantaneous image of the vortex, weakens the negative side of danger signals, and utilizes the transparent property of the material to form a wonderful experience of vision and actual touch, giving people a beautiful association.

The common vortex of water in life is refined into successful works of art, such as a variety of tables, chairs, small stools and others, so that art takes on a high level of affinity. The secret of the vortex is that simple.

Water means wealth in traditional Chinese culture. Whirlpool symbolizes the accumulation of wealth, so the products boast artistic beauty and auspicious meaning as well.



VORTEX SIDE TABLE

BCT002

Size:

L650*W650*H650mm

Material:

Glacier Crystal

The collection was inspired by nature's common water vortices, which are spirals formed when water meets low places. The vortex symbolizes danger and unpredictability, and is often intimidating, creating fear associations.

The product solidifies time through artistic creation, captures the instantaneous image of the vortex, weakens the negative side of danger signals, and utilizes the transparent property of the material to form a wonderful experience of vision and actual touch, giving people a beautiful association.

The common vortex of water in life is refined into successful works of art, such as a variety of tables, chairs, small stools and others, so that art takes on a high level of affinity. The secret of the vortex is that simple.

Water means wealth in traditional Chinese culture. Whirlpool symbolizes the accumulation of wealth, so the products boast artistic beauty and auspicious meaning as well.



INGENIOUS SIDE TABLE

BCT003

Size:

L490*W490*H500mm

Material:

Glacier Crystal

The ancients believed that a heart stained with impurities cannot comprehend the fundamental essence of all things. This series draws inspiration from nature, taking cues from materials such as stones, wood grain, and withered branches and leaves. Through the use of transparent materials as the medium, this series imbues these natural elements with new life, liberating the soul and pursuing a state of tranquil clarity and spiritual transcendence.



N-SHAPED SIDE TABLE

BCT004

Size:

L500*W340*H670mm

Material:

Glacier Crystal

The ancients believed that a heart stained with impurities cannot comprehend the fundamental essence of all things. This series draws inspiration from nature, taking cues from materials such as stones, wood grain, and withered branches and leaves. Through the use of transparent materials as the medium, this series imbues these natural elements with new life, liberating the soul and pursuing a state of tranquil clarity and spiritual transcendence.



TWINING SIDE TABLE

BCT005

Size:

L460*W460*H500mm

Material:

Glacier Crystal

The Free Flow series is a design inspired by the "deconstruction" theory proposed by philosophers such as Jacques Derrida and Nietzsche, which gives rise to a free-flowing form of design. It combines the features of deconstructive design: non-centered, non-sequential, fluid, non-binary, fragmented, and disorderly diversification.

The Free Flow series expresses natural tension by not following classical axes and orders, but rather by extending irregularly. It establishes a new context, oriented towards the future, with a higher level of harmony and unity with the living environment.

The shapes of the series are full and rich in detail.

The composition structure of disorder, growth, and ambiguity is like a series of surprises and joys that are full of exploration and sudden enlightenment in life. It symbolizes our spirit of innovation and exploration, daring to break conventions and explore multidimensional thoughts.



WOOD GRAIN COFFEE TABLE

BCT006

Size:

L1400*W1340*H100mm

Material:

Glacier Crystal

Nature and artists, colliding with the latest high-tech transparent material molding process, colliding with nature and artists, spark a neo-luxism.

Each piece of work is unique. Though seemingly unintentional, each decaying wood, each dead branch or even each leaf, is actually carefully selected by the artist as he goes deep into nature. Materials have gone through the baptism of time which left traces of its memory. Adhering to the spirit of the craftsman, the artist creates a series of creative home items through 28 steps of grinding, polishing and other complicated processes, making decaying wood, dead branches and leaves recover their respiration and glow with new life. Time seems to stand still, while life has been sublimated.



LOTUS COFFEE TABLE

BCT007

Size:

L1400*W1340*H290mm

Material:

Glacier Crystal

Nature and artists, colliding with the latest high-tech transparent material molding process, colliding with nature and artists, spark a neo-luxism.

Each piece of work is unique. Though seemingly unintentional, each decaying wood, each dead branch or even each leaf, is actually carefully selected by the artist as he goes deep into nature. Materials have gone through the baptism of time which left traces of its memory. Adhering to the spirit of the craftsman, the artist creates a series of creative home items through 28 steps of grinding, polishing and other complicated processes, making decaying wood, dead branches and leaves recover their respiration and glow with new life. Time seems to stand still, while life has been sublimated.



EMPTINESS (ROUND TEA TABLE)

BCT008

Size:

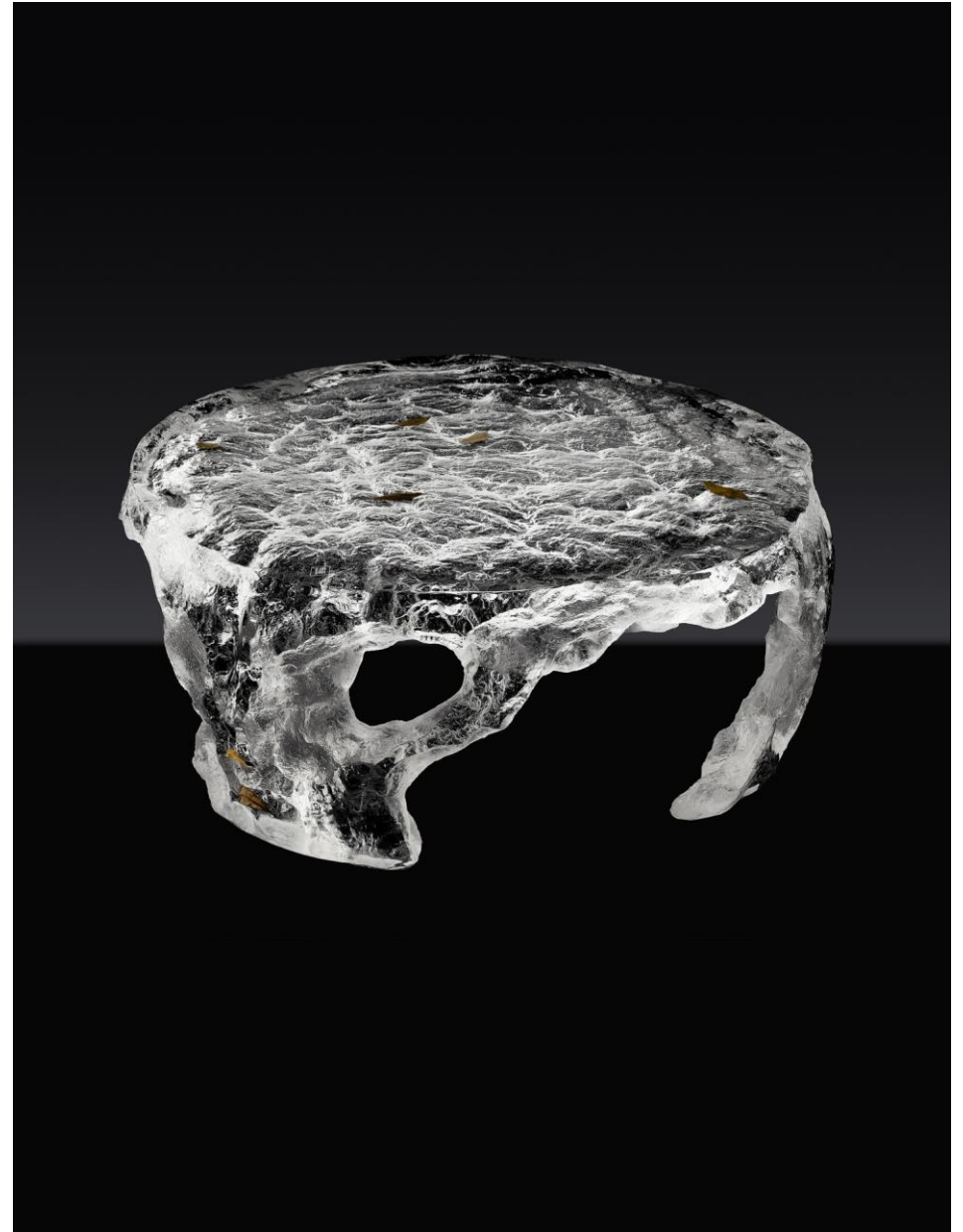
L880*W880*H420mm

Material:

Glacier Crystal

Nature and artists, colliding with the latest high-tech transparent material molding process, colliding with nature and artists, spark a neo-luxism.

Each piece of work is unique. Though seemingly unintentional, each decaying wood, each dead branch or even each leaf, is actually carefully selected by the artist as he goes deep into nature. Materials have gone through the baptism of time which left traces of its memory. Adhering to the spirit of the craftsman, the artist creates a series of creative home items through 28 steps of grinding, polishing and other complicated processes, making decaying wood, dead branches and leaves recover their respiration and glow with new life. Time seems to stand still, while life has been sublimated.



JADE BRANCH FLOWER STAND (H)

BCT012

Size:

L370*W370*H940mm

Material:

Glacier Crystal

The seemingly irregular twisted branches of the tree itself embody a kind of beauty, which, through the designer's shaping and the fusion with transparent materials, breaks through the traditional style of horizontal and vertical table legs, appearing more sturdy and beautiful.



JADE BRANCH FLOWER STAND (M)

BCT013

Size:

L360*W360*H840mm

Material:

Glacier Crystal

The seemingly irregular twisted branches of the tree itself embody a kind of beauty, which, through the designer's shaping and the fusion with transparent materials, breaks through the traditional style of horizontal and vertical table legs, appearing more sturdy and beautiful.



JADE BRANCH FLOWER STAND (S)

BCT014

Size:

L520*W520*H500mm

Material:

Glacier Crystal

The seemingly irregular twisted branches of the tree itself embody a kind of beauty, which, through the designer's shaping and the fusion with transparent materials, breaks through the traditional style of horizontal and vertical table legs, appearing more sturdy and beautiful.



-MIRRORS-

CELESTIAL WATER MIRROR

(SILVER WITH LIGHT)

BMI001a

Size:

L850*W800*H330mm

Material:

Glacier Crystal

This work is transformed by "water." The works adopt a form of composition, that is, the combination of science and technology and art, traditional skills and contemporary craft, traditional culture and contemporary language, presenting the cultural traditions accumulated by Chinese culture in a new form, while containing a bold and unrestrained romantic temperament.

Centering on the core concept of "Oriental philosophy", the work is deeply rooted in tradition and created by contemporary techniques, which not only emphasizes the "present" of contemporary art creation, but also highlights the "past" contained in contemporary art creation.



CELESTIAL WATER MIRROR (GOLDEN WITH LIGHT)

BMI001b

Size:

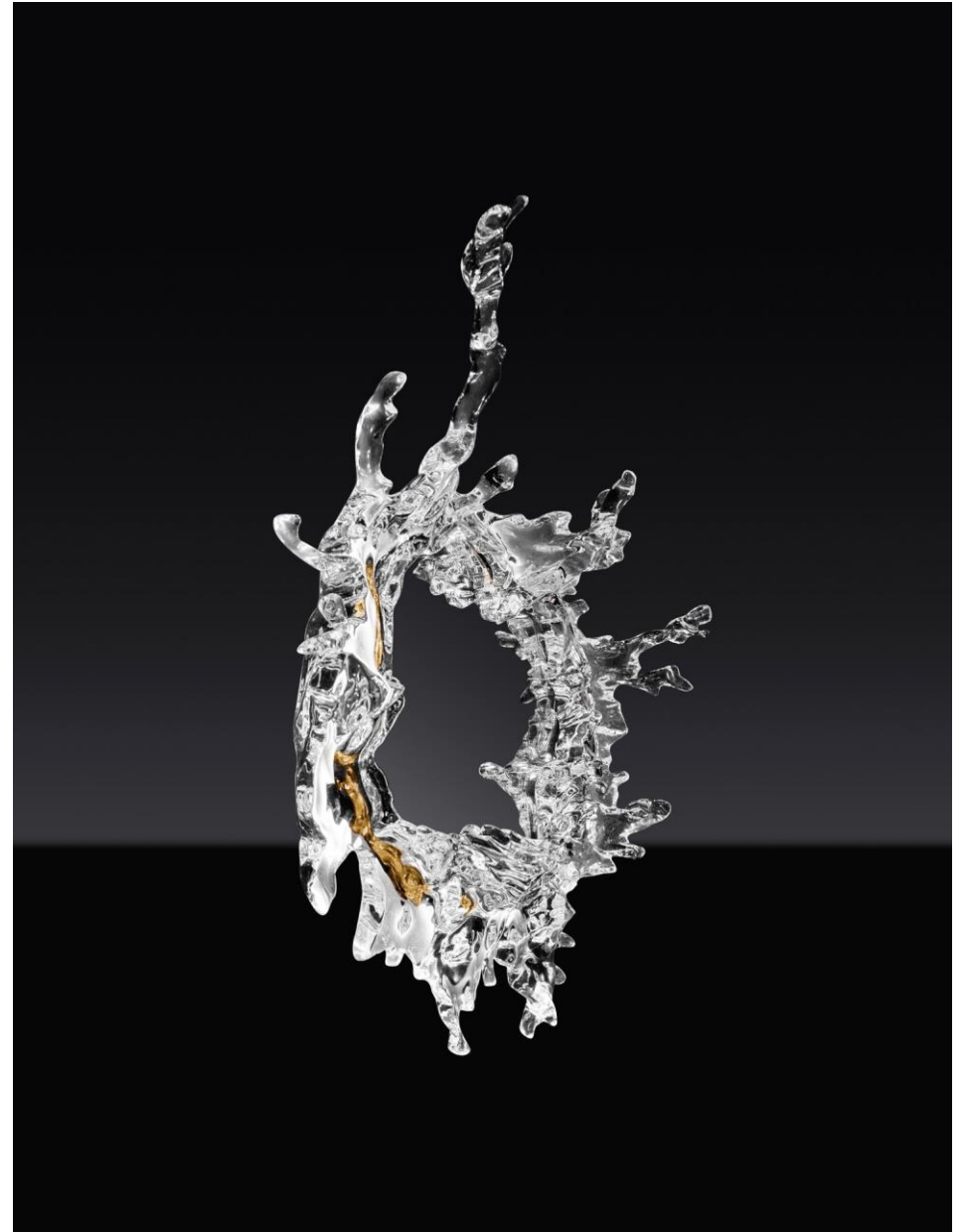
L850*W800*H330mm

Material:

Glacier Crystal

This work is transformed by "water." The works adopt a form of composition, that is, the combination of science and technology and art, traditional skills and contemporary craft, traditional culture and contemporary language, presenting the cultural traditions accumulated by Chinese culture in a new form, while containing a bold and unrestrained romantic temperament.

Centering on the core concept of "Oriental philosophy", the work is deeply rooted in tradition and created by contemporary techniques, which not only emphasizes the "present" of contemporary art creation, but also highlights the "past" contained in contemporary art creation.



CELESTIAL WATER MIRROR (SILVER LARGE)

BMI002a

Size:

L1200*W1100*H300mm

Material:

Glacier Crystal

This work is transformed by "water." The works adopt a form of composition, that is, the combination of science and technology and art, traditional skills and contemporary craft, traditional culture and contemporary language, presenting the cultural traditions accumulated by Chinese culture in a new form, while containing a bold and unrestrained romantic temperament.

Centering on the core concept of "Oriental philosophy", the work is deeply rooted in tradition and created by contemporary techniques, which not only emphasizes the "present" of contemporary art creation, but also highlights the "past" contained in contemporary art creation.



CELESTIAL WATER MIRROR (GOLDEN LARGE)

BMI002b

Size:

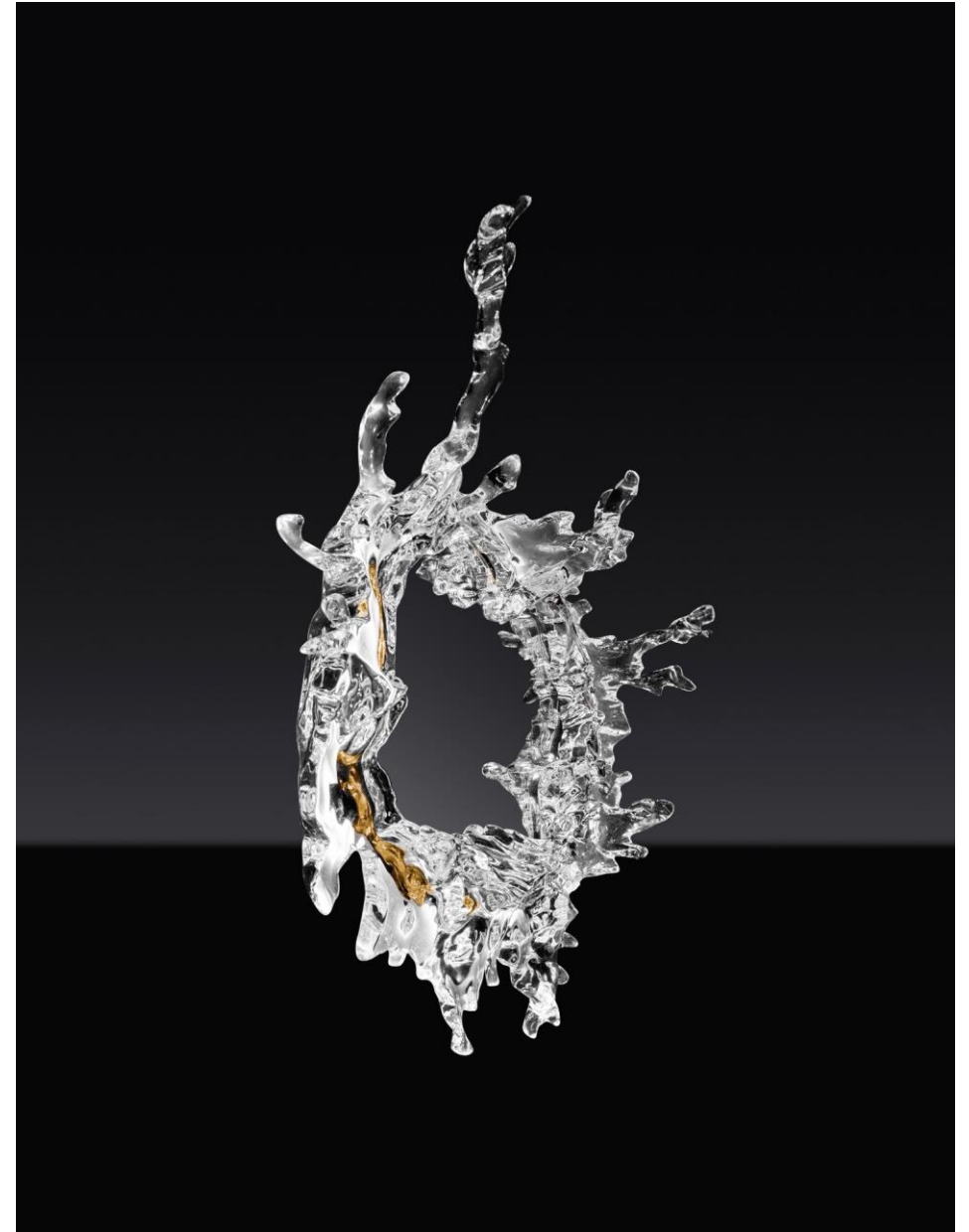
L1200*W1100*H300mm

Material:

Glacier Crystal

This work is transformed by "water." The works adopt a form of composition, that is, the combination of science and technology and art, traditional skills and contemporary craft, traditional culture and contemporary language, presenting the cultural traditions accumulated by Chinese culture in a new form, while containing a bold and unrestrained romantic temperament.

Centering on the core concept of "Oriental philosophy", the work is deeply rooted in tradition and created by contemporary techniques, which not only emphasizes the "present" of contemporary art creation, but also highlights the "past" contained in contemporary art creation.



GLACIER CRYSTAL MIRROR

BMI003

Size:

L650*W90*H700mm

Material:

Glacier Crystal

This work is transformed by "water." The works adopt a form of composition, that is, the combination of science and technology and art, traditional skills and contemporary craft, traditional culture and contemporary language, presenting the cultural traditions accumulated by Chinese culture in a new form, while containing a bold and unrestrained romantic temperament.

Centering on the core concept of "Oriental philosophy", the work is deeply rooted in tradition and created by contemporary techniques, which not only emphasizes the "present" of contemporary art creation, but also highlights the "past" contained in contemporary art creation.



-LIGHTING-

GREAT VIRTUE AS WATER⁽¹⁾

BHO001

Size:

L1230*W400*H450mm

Material:

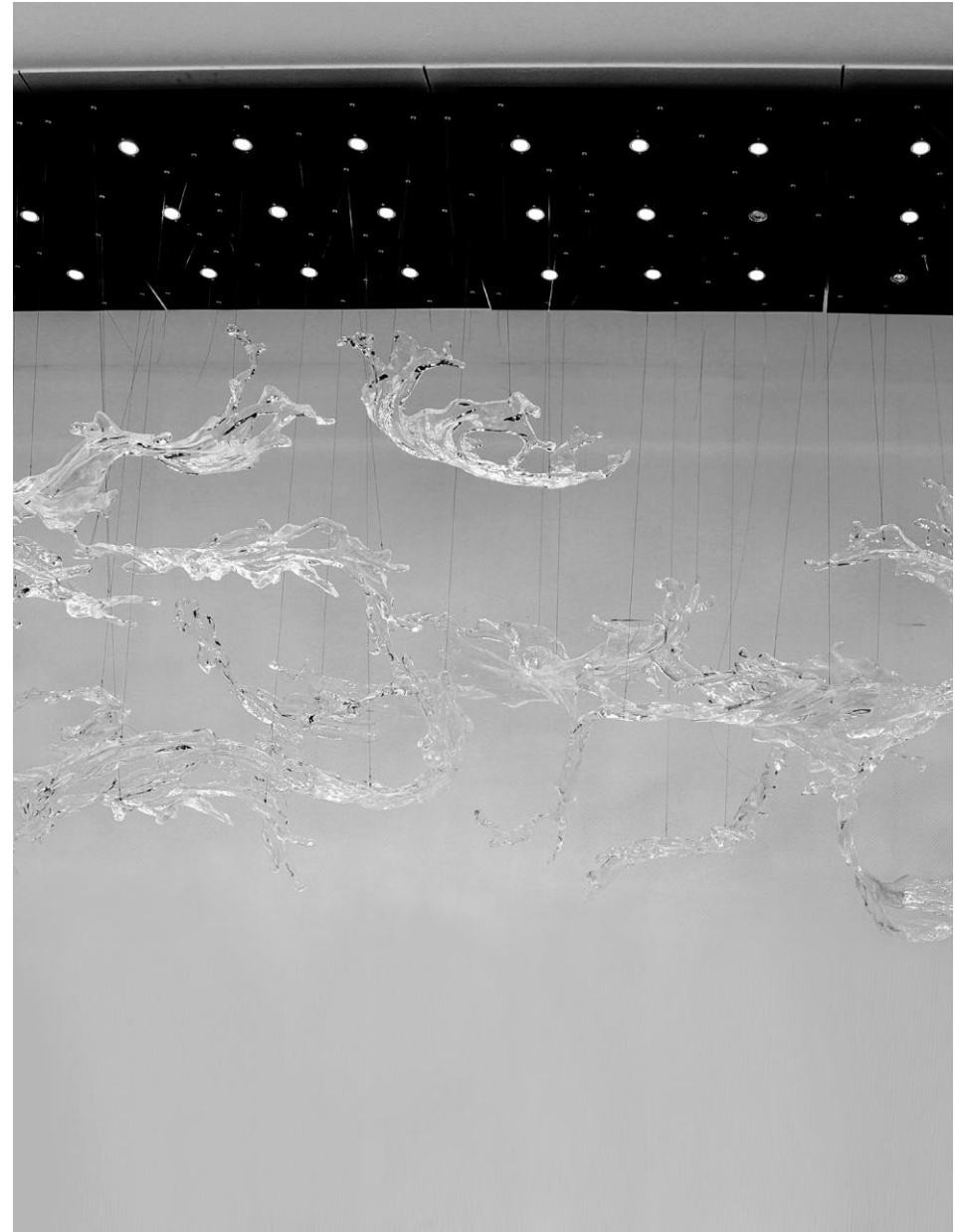
Glacier Crystal

The art installation "Great Virtue as Water" is a graceful artwork created by artist Wu Daijie in the spirit of craftsmen, integrating contemporary high-tech creation.

The artist's inspiration comes from Laozi's Tao Te Ching, a classic of Oriental philosophy: "Water benefits everything by giving without taking or contending.

This is a humble virtue. This means that the conduct of the best, like water, can nourish and benefit all things, but not compete with all things for anything.

This artwork, with great tension of grand momentum and bright visual effects, stimulates people's thinking about reality, human nature.



GREAT VIRTUE AS WATER⁽²⁾

BHO002

Size:

L800*W400*H150mm

Material:

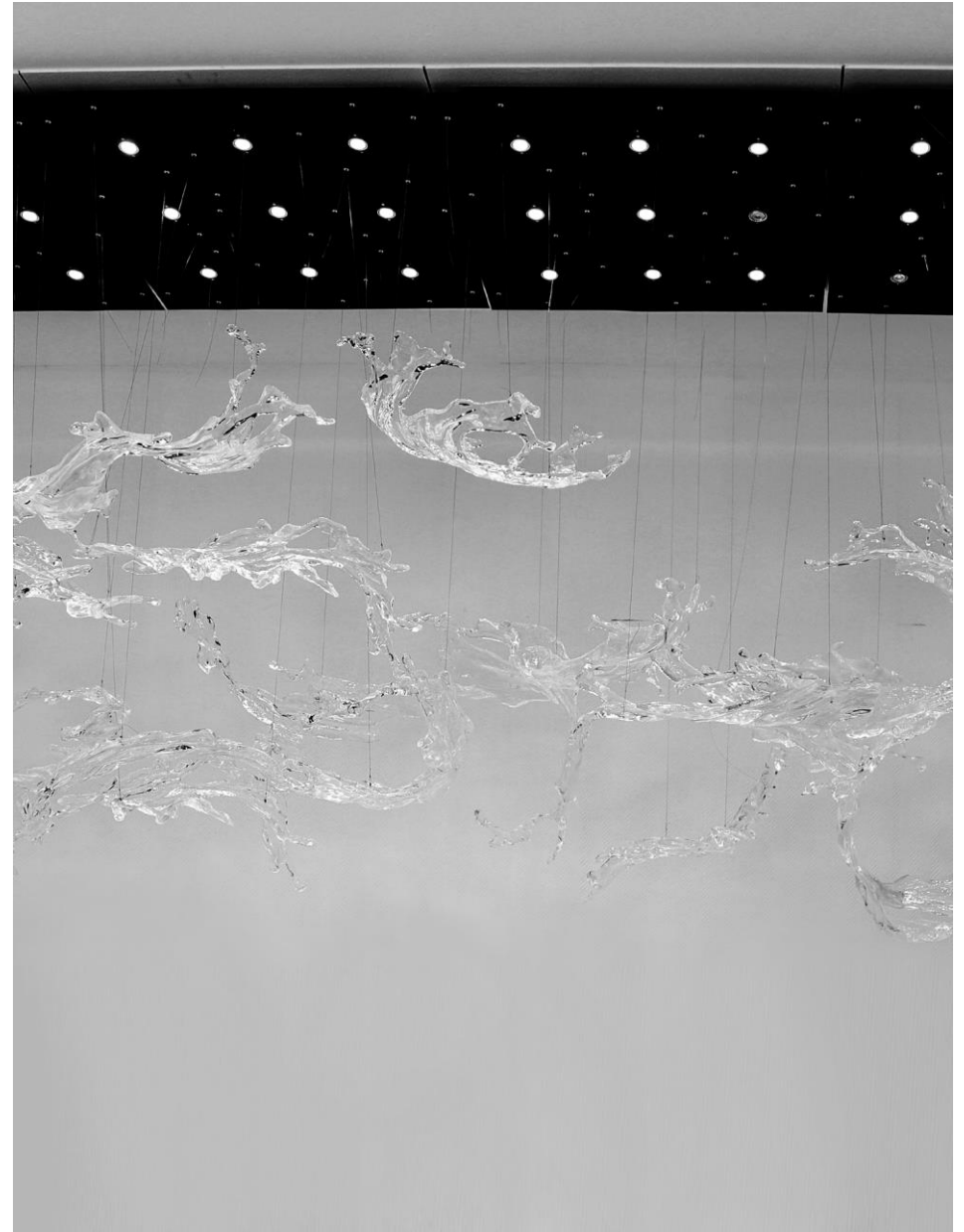
Glacier Crystal

The art installation "Great Virtue as Water" is a graceful artwork created by artist Wu Daijie in the spirit of craftsmen, integrating contemporary high-tech creation.

The artist's inspiration comes from Laozi's Tao Te Ching, a classic of Oriental philosophy: "Water benefits everything by giving without taking or contending.

This is a humble virtue. This means that the conduct of the best, like water, can nourish and benefit all things, but not compete with all things for anything.

This artwork, with great tension of grand momentum and bright visual effects, stimulates people's thinking about reality, human nature.



GREAT VIRTUE AS WATER⁽³⁾

BHO003

Size:

L730*W500*H240mm

Material:

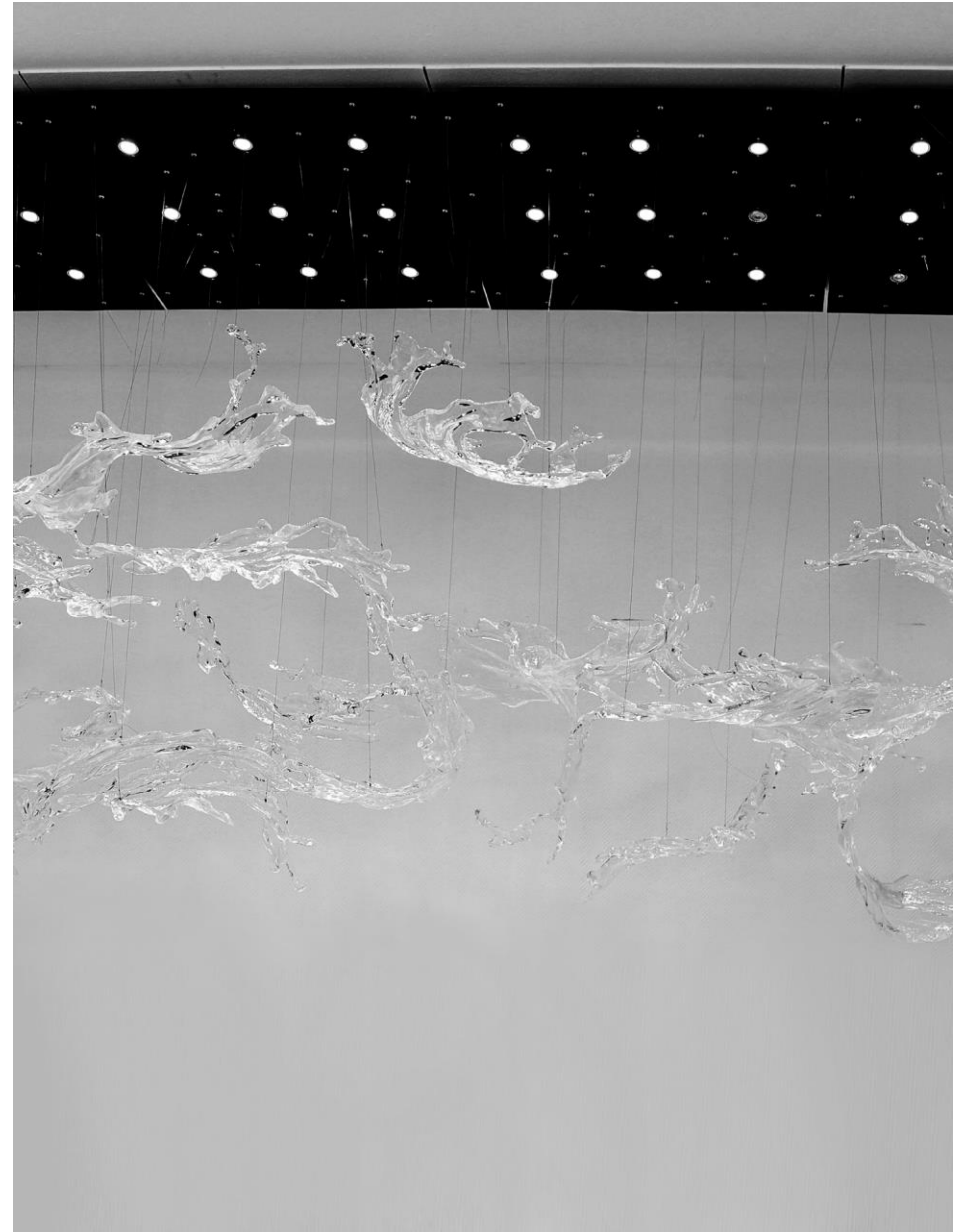
Glacier Crystal

The art installation "Great Virtue as Water" is a graceful artwork created by artist Wu Daijie in the spirit of craftsmen, integrating contemporary high-tech creation.

The artist's inspiration comes from Laozi's Tao Te Ching, a classic of Oriental philosophy: "Water benefits everything by giving without taking or contending.

This is a humble virtue. This means that the conduct of the best, like water, can nourish and benefit all things, but not compete with all things for anything.

This artwork, with great tension of grand momentum and bright visual effects, stimulates people's thinking about reality, human nature.



GREAT VIRTUE AS WATER⁽⁴⁾

BHO004

Size:

L1050*W520*H220mm

Material:

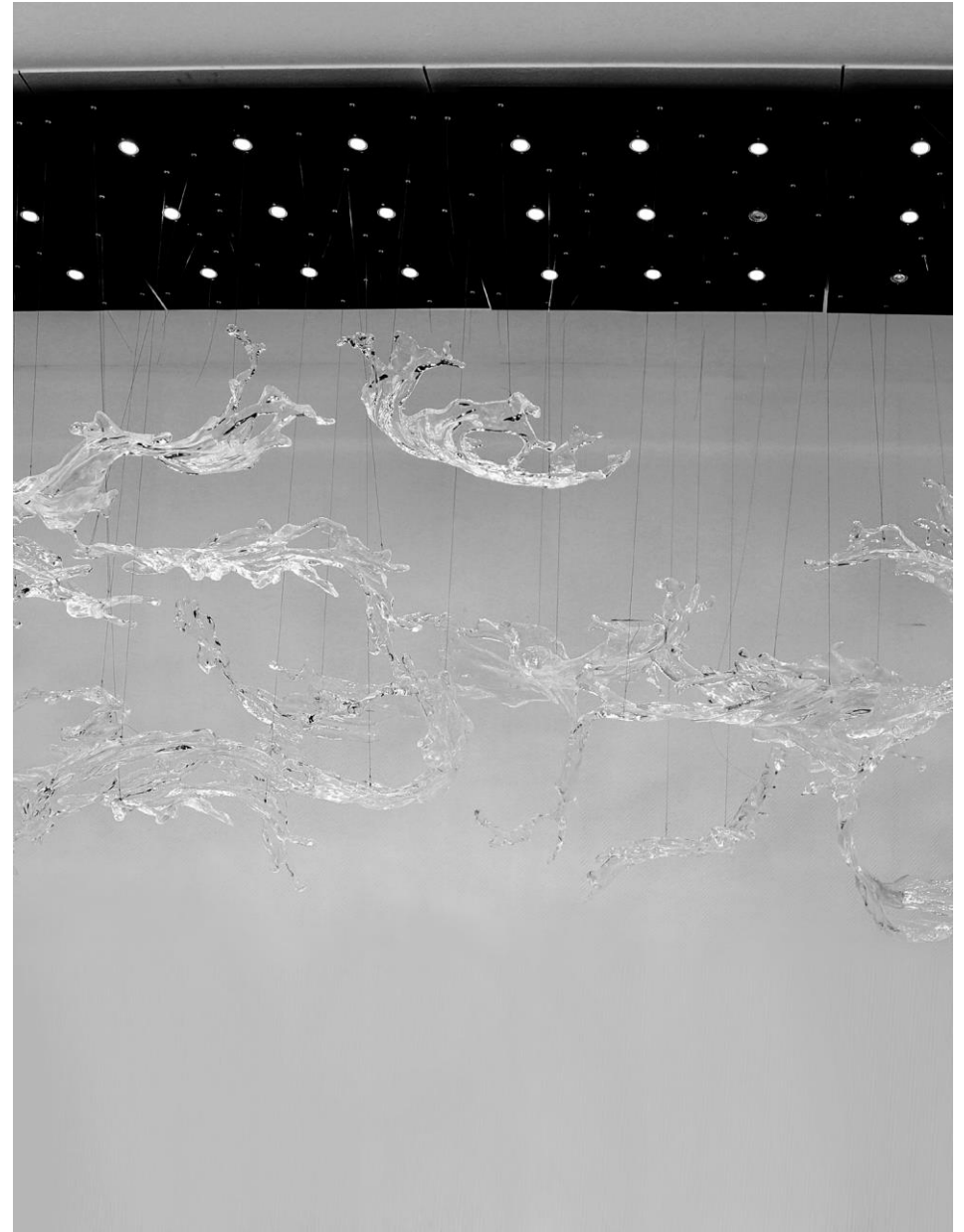
Glacier Crystal

The art installation "Great Virtue as Water" is a graceful artwork created by artist Wu Daijie in the spirit of craftsmen, integrating contemporary high-tech creation.

The artist's inspiration comes from Laozi's Tao Te Ching, a classic of Oriental philosophy: "Water benefits everything by giving without taking or contending.

This is a humble virtue. This means that the conduct of the best, like water, can nourish and benefit all things, but not compete with all things for anything.

This artwork, with great tension of grand momentum and bright visual effects, stimulates people's thinking about reality, human nature.



GREAT VIRTUE AS WATER⁽⁵⁾

BHO005

Size:

L820*W420*H350mm

Material:

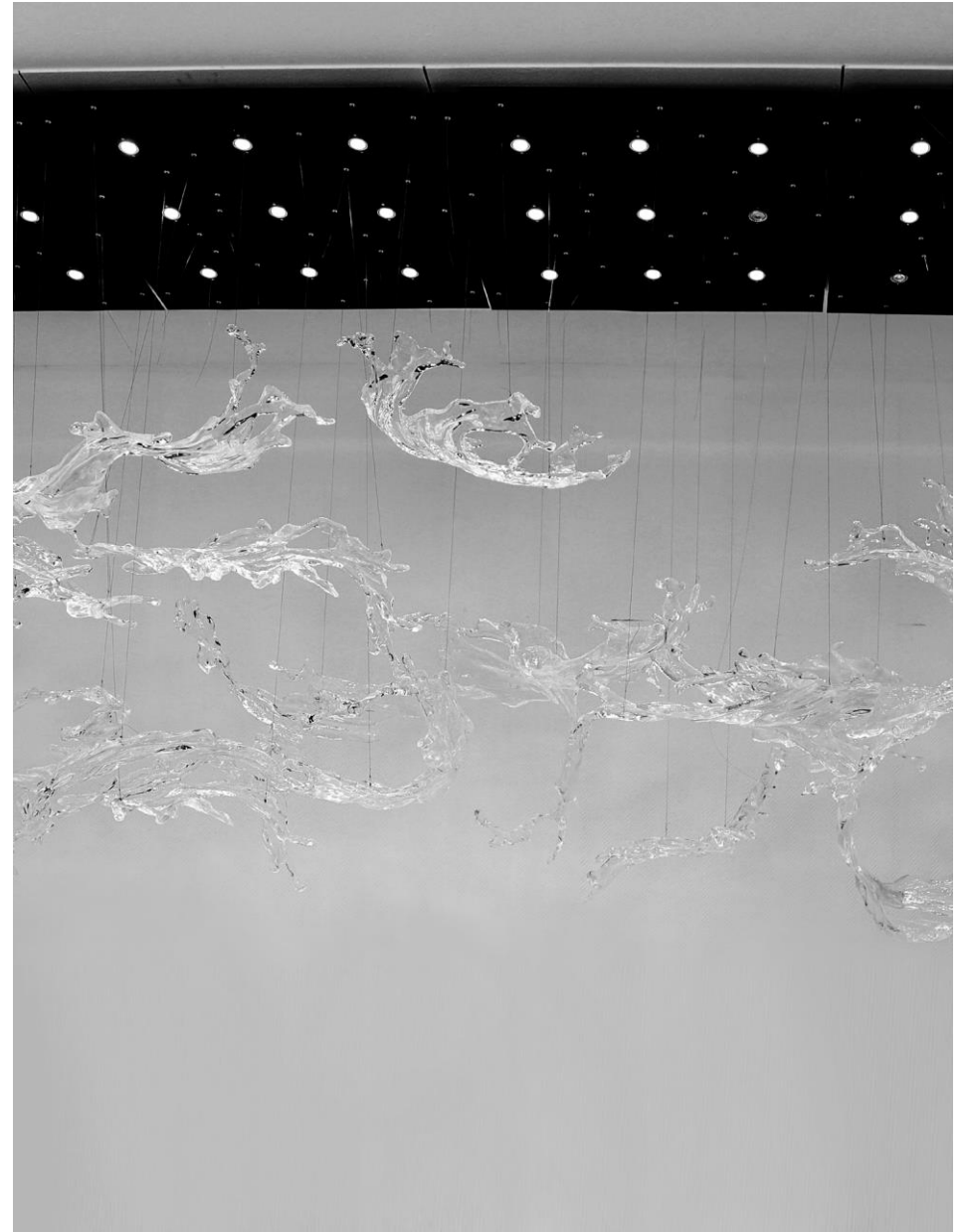
Glacier Crystal

The art installation "Great Virtue as Water" is a graceful artwork created by artist Wu Daijie in the spirit of craftsmen, integrating contemporary high-tech creation.

The artist's inspiration comes from Laozi's Tao Te Ching, a classic of Oriental philosophy: "Water benefits everything by giving without taking or contending.

This is a humble virtue. This means that the conduct of the best, like water, can nourish and benefit all things, but not compete with all things for anything.

This artwork, with great tension of grand momentum and bright visual effects, stimulates people's thinking about reality, human nature.



GREAT VIRTUE AS WATER⁽⁶⁾

BHO006

Size:

L1400*W800*H300mm

Material:

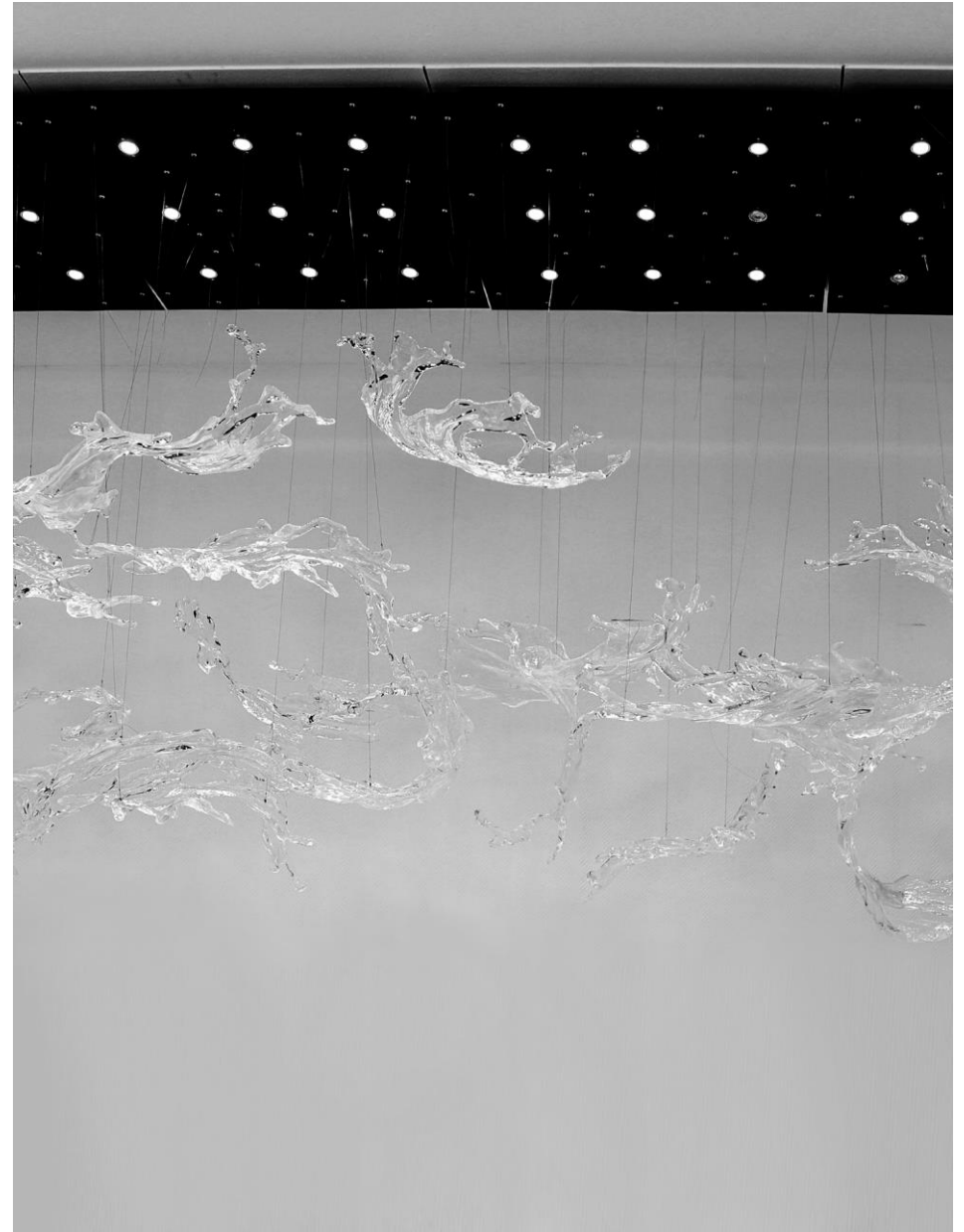
Glacier Crystal

The art installation "Great Virtue as Water" is a graceful artwork created by artist Wu Daijie in the spirit of craftsmen, integrating contemporary high-tech creation.

The artist's inspiration comes from Laozi's Tao Te Ching, a classic of Oriental philosophy: "Water benefits everything by giving without taking or contending.

This is a humble virtue. This means that the conduct of the best, like water, can nourish and benefit all things, but not compete with all things for anything.

This artwork, with great tension of grand momentum and bright visual effects, stimulates people's thinking about reality, human nature.



GREAT VIRTUE AS WATER⁽⁷⁾

BHO007

Size:

L900*W400*H200mm

Material:

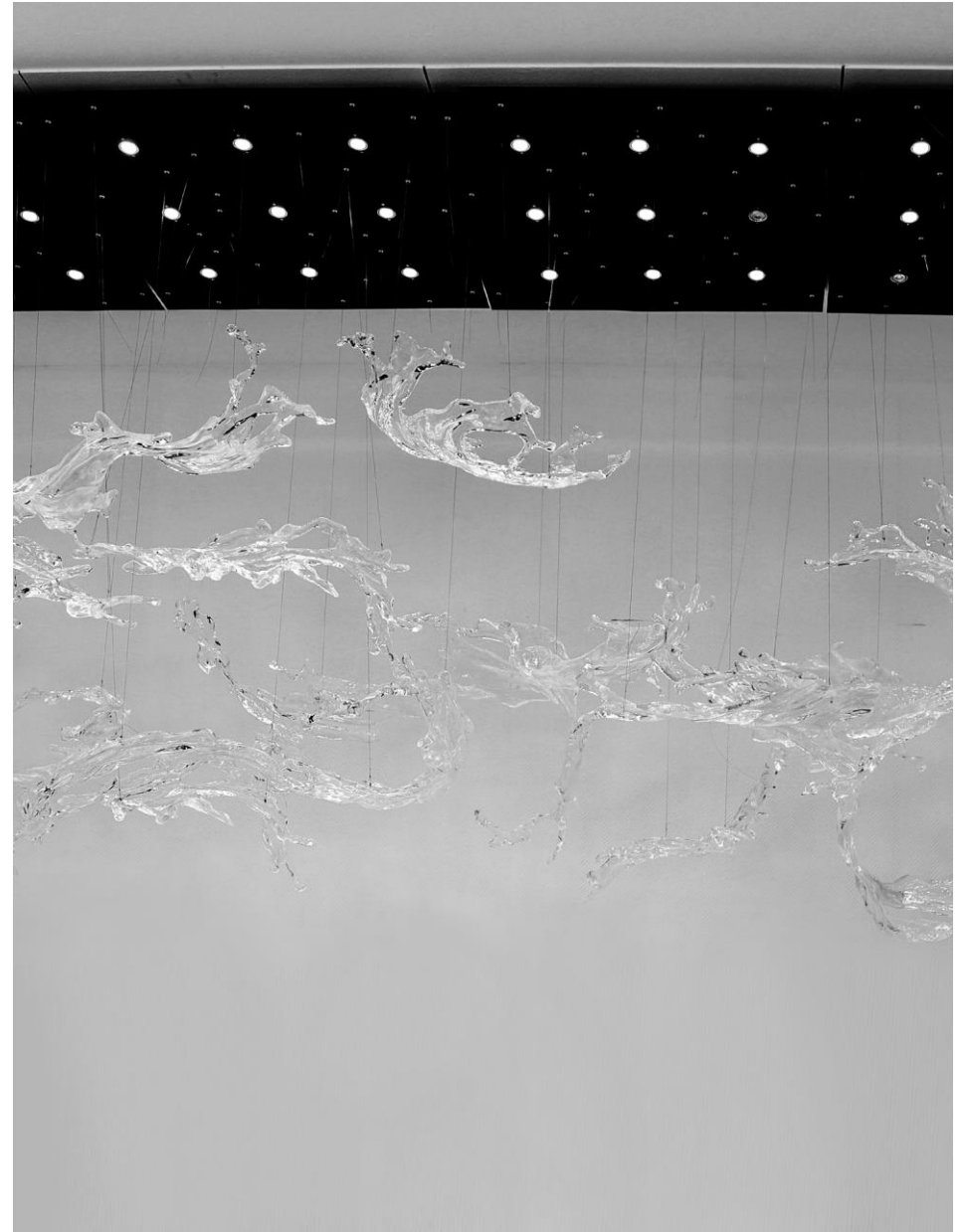
Glacier Crystal

The art installation "Great Virtue as Water" is a graceful artwork created by artist Wu Daijie in the spirit of craftsmen, integrating contemporary high-tech creation.

The artist's inspiration comes from Laozi's Tao Te Ching, a classic of Oriental philosophy: "Water benefits everything by giving without taking or contending.

This is a humble virtue. This means that the conduct of the best, like water, can nourish and benefit all things, but not compete with all things for anything.

This artwork, with great tension of grand momentum and bright visual effects, stimulates people's thinking about reality, human nature.



GREAT VIRTUE AS WATER⁽⁸⁾

BHO008

Size:

L740*W460*H260mm

Material:

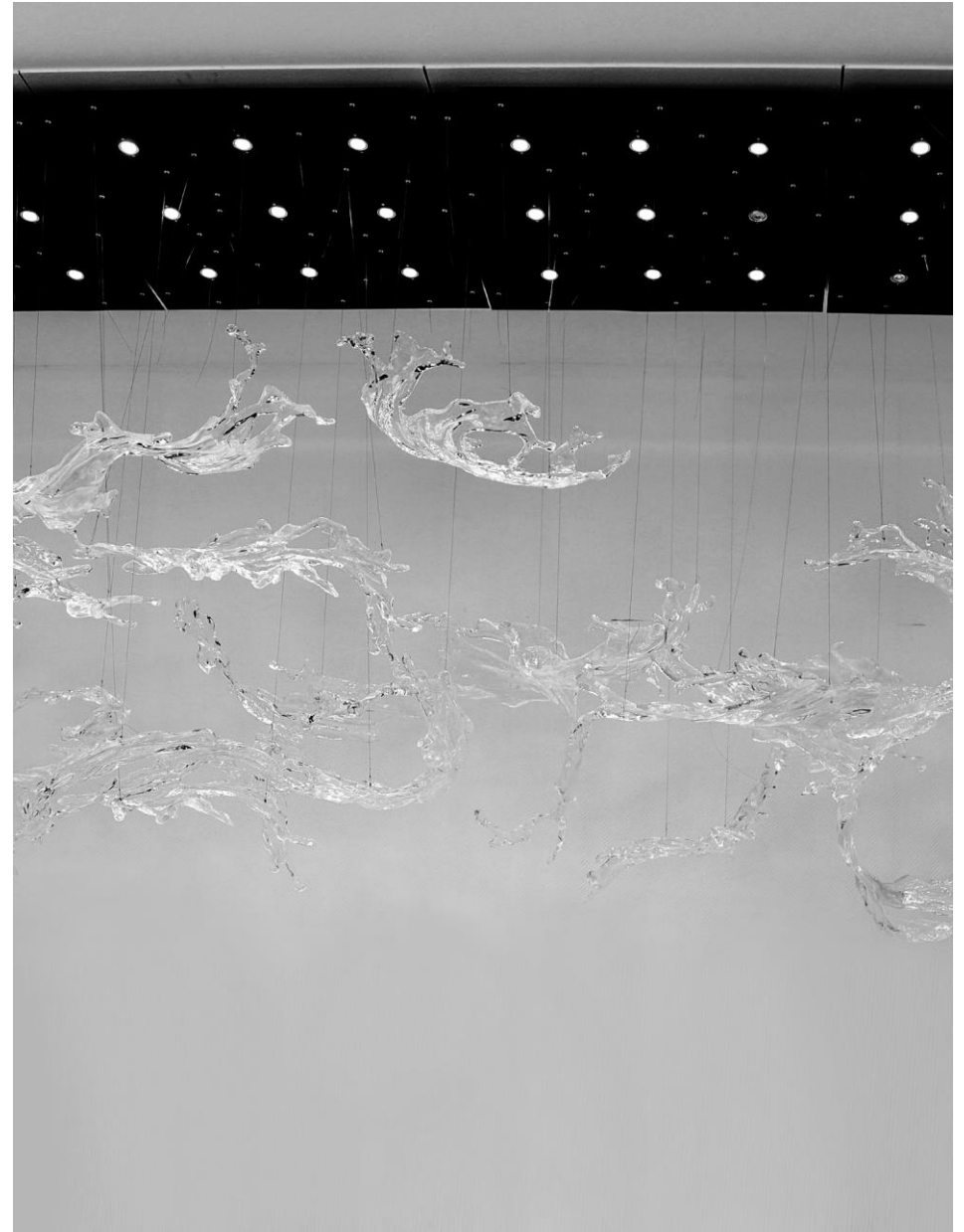
Glacier Crystal

The art installation "Great Virtue as Water" is a graceful artwork created by artist Wu Daijie in the spirit of craftsmen, integrating contemporary high-tech creation.

The artist's inspiration comes from Laozi's Tao Te Ching, a classic of Oriental philosophy: "Water benefits everything by giving without taking or contending.

This is a humble virtue. This means that the conduct of the best, like water, can nourish and benefit all things, but not compete with all things for anything.

This artwork, with great tension of grand momentum and bright visual effects, stimulates people's thinking about reality, human nature.



GREAT VIRTUE AS WATER⁽⁹⁾

BHO009

Size:

L1100*W500*H300mm

Material:

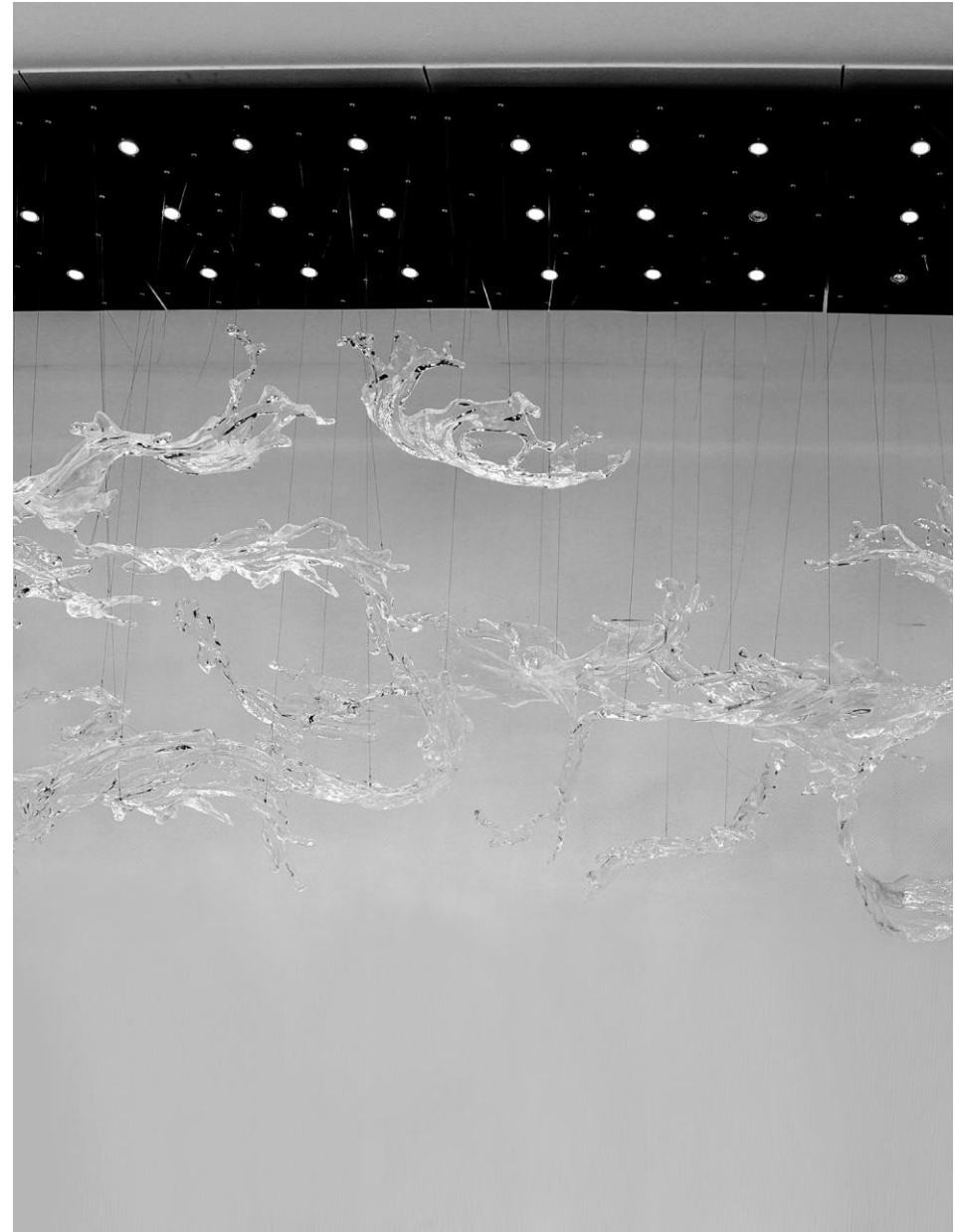
Glacier Crystal

The art installation "Great Virtue as Water" is a graceful artwork created by artist Wu Daijie in the spirit of craftsmen, integrating contemporary high-tech creation.

The artist's inspiration comes from Laozi's Tao Te Ching, a classic of Oriental philosophy: "Water benefits everything by giving without taking or contending.

This is a humble virtue. This means that the conduct of the best, like water, can nourish and benefit all things, but not compete with all things for anything.

This artwork, with great tension of grand momentum and bright visual effects, stimulates people's thinking about reality, human nature.



GREAT VIRTUE AS WATER⁽¹⁰⁾

BHO010

Size:

L930*W530*H500mm

Material:

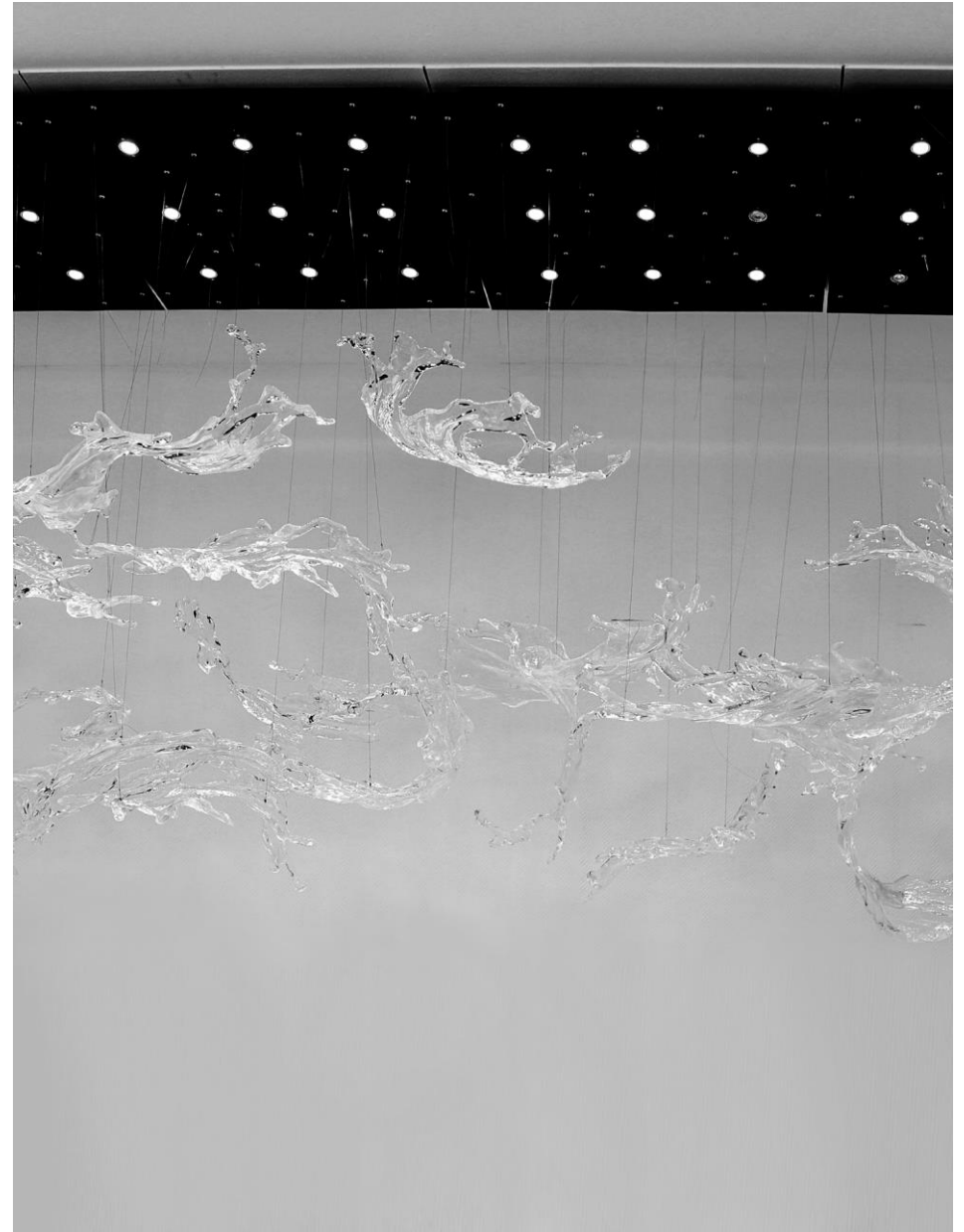
Glacier Crystal

The art installation "Great Virtue as Water" is a graceful artwork created by artist Wu Daijie in the spirit of craftsmen, integrating contemporary high-tech creation.

The artist's inspiration comes from Laozi's Tao Te Ching, a classic of Oriental philosophy: "Water benefits everything by giving without taking or contending.

This is a humble virtue. This means that the conduct of the best, like water, can nourish and benefit all things, but not compete with all things for anything.

This artwork, with great tension of grand momentum and bright visual effects, stimulates people's thinking about reality, human nature.



DEER HEAD WALL LAMP (S)

BWL001

Size:

L600*W300*H500mm

Material:

Glacier Crystal; Stainless Steel

Deers often appear among the immortal mountains, implicating longevity and auspiciousness.

A place with deer, good weather comes; a house with deer is a house with prosperity.

In Chinese, "deer" and "emolument" are both pronounced as "lu", meaning wealth and fortune.



EVER-THRIVING WALL LAMP (8 BULBS)

BWL002

Size:

L850*W300*H1100mm

Material:

Glacier Crystal; Brass

The work is inspired by nature's most common leaves.

Nature breeds life, and leaves symbolize life and hope.

This series of works takes leaves as the prototype for artistic recreation, enlarges the natural form, shape and vein texture of leaves, and emphasizes the beauty of nature. With the participation of optical refraction and reflection effect, the charm of artistic creation is more obvious. The integration of art, fashion, nature and creativity makes the tension of life sublimated, meaning full of vitality and endless life.



EVER-THRIVING WALL LAMP (S)

BWL003

Size:

L500*W230*H670mm

Material:

Glacier Crystal; Brass

The work is inspired by nature's most common leaves.

Nature breeds life, and leaves symbolize life and hope.

This series of works takes leaves as the prototype for artistic re-creation, enlarges the natural form, shape and vein texture of leaves, and emphasizes the beauty of nature. With the participation of optical refraction and reflection effect, the charm of artistic creation is more obvious. The integration of art, fashion, nature and creativity makes the tension of life sublimated, meaning full of vitality and endless life.



DEER HEAD WALL LAMP (L)

BWL004

Size:

L850*W400*H1860mm

Material:

Glacier Crystal

Deers often appear among the immortal mountains, implicating longevity and auspiciousness.

A place with deer, good weather comes; a house with deer is a house with prosperity.

In Chinese, "deer" and "emolument" are both pronounced as "lu", meaning wealth and fortune.



EVER-THRIVING WALL LAMP (L)

BWL005

Size:

L2750*W2200*H2200mm

Material:

Acrylic+Brass

The work is inspired by nature's most common leaves.

Nature breeds life, and leaves symbolize life and hope.

This series of works takes leaves as the prototype for artistic re-creation, enlarges the natural form, shape and vein texture of leaves, and emphasizes the beauty of nature. With the participation of optical refraction and reflection effect, the charm of artistic creation is more obvious. The integration of art, fashion, nature and creativity makes the tension of life sublimated, meaning full of vitality and endless life.



EVER-THRIVING LARGE CEILING LAMP

BCD001

Size:

L4200*W1500*H1200mm

Material:

Acrylic+Brass

The work is inspired by nature's most common leaves.

Nature breeds life, and leaves symbolize life and hope.

This series of works takes leaves as the prototype for artistic re-creation, enlarges the natural form, shape and vein texture of leaves, and emphasizes the beauty of nature. With the participation of optical refraction and reflection effect, the charm of artistic creation is more obvious. The integration of art, fashion, nature and creativity makes the tension of life sublimated, meaning full of vitality and endless life.



EVER-THRIVING CEILING LAMP

BCD002

Size:

L2000*W2000*H1000mm

Material:

Acrylic+Brass

The work is inspired by nature's most common leaves.

Nature breeds life, and leaves symbolize life and hope.

This series of works takes leaves as the prototype for artistic re-creation, enlarges the natural form, shape and vein texture of leaves, and emphasizes the beauty of nature. With the participation of optical refraction and reflection effect, the charm of artistic creation is more obvious. The integration of art, fashion, nature and creativity makes the tension of life sublimated, meaning full of vitality and endless life.



EVER-THRIVING LONG CEILING LAMP

BCD003

Size:

L1500*W1500*H2800mm

Material:

Acrylic+Brass

The work is inspired by nature's most common leaves.

Nature breeds life, and leaves symbolize life and hope.

This series of works takes leaves as the prototype for artistic re-creation, enlarges the natural form, shape and vein texture of leaves, and emphasizes the beauty of nature. With the participation of optical refraction and reflection effect, the charm of artistic creation is more obvious. The integration of art, fashion, nature and creativity makes the tension of life sublimated, meaning full of vitality and endless life.



EVER-THRIVING CEILING LAMP

BCD004

Size:

L1600*W1600*H700mm

Material:

Acrylic+Brass

The work is inspired by nature's most common leaves.

Nature breeds life, and leaves symbolize life and hope.

This series of works takes leaves as the prototype for artistic recreation, enlarges the natural form, shape and vein texture of leaves, and emphasizes the beauty of nature. With the participation of optical refraction and reflection effect, the charm of artistic creation is more obvious. The integration of art, fashion, nature and creativity makes the tension of life sublimated, meaning full of vitality and endless life.



EVER-THRIVING DINNING-HALL CEILING LAMP

BCD005

Size:

L1750*W800*H500mm

Material:

Acrylic+Brass

The work is inspired by nature's most common leaves.

Nature breeds life, and leaves symbolize life and hope.

This series of works takes leaves as the prototype for artistic re-creation, enlarges the natural form, shape and vein texture of leaves, and emphasizes the beauty of nature. With the participation of optical refraction and reflection effect, the charm of artistic creation is more obvious. The integration of art, fashion, nature and creativity makes the tension of life sublimated, meaning full of vitality and endless life.



LEAF PENDENT (SINGLE)

BCD006

Size:

L180*W120*H500mm

Material:

Acrylic+Brass

The work is inspired by nature's most common leaves.

Nature breeds life, and leaves symbolize life and hope.

This series of works takes leaves as the prototype for artistic recreation, enlarges the natural form, shape and vein texture of leaves, and emphasizes the beauty of nature. With the participation of optical refraction and reflection effect, the charm of artistic creation is more obvious. The integration of art, fashion, nature and creativity makes the tension of life sublimated, meaning full of vitality and endless life.



PEACOCK FEATHER PENDENT

BCD007

Size:

L180*W75*H300mm

Material:

Glacier Crystal; Brass

Nature has always been a wellspring of inspiration for artists. takes various natural images, such as rocks, branches, mountains, and animals, and reinterprets them through the artist's profound understanding of nature.



EVER-THRIVING FLOOR LAMP

BFL001

Size:

L700*W600*H1760mm

Material:

Acrylic+Brass

The work is inspired by nature's most common leaves.

Nature breeds life, and leaves symbolize life and hope.

This series of works takes leaves as the prototype for artistic re-creation, enlarges the natural form, shape and vein texture of leaves, and emphasizes the beauty of nature. With the participation of optical refraction and reflection effect, the charm of artistic creation is more obvious. The integration of art, fashion, nature and creativity makes the tension of life sublimated, meaning full of vitality and endless life.



STONE LAMP

BFL002

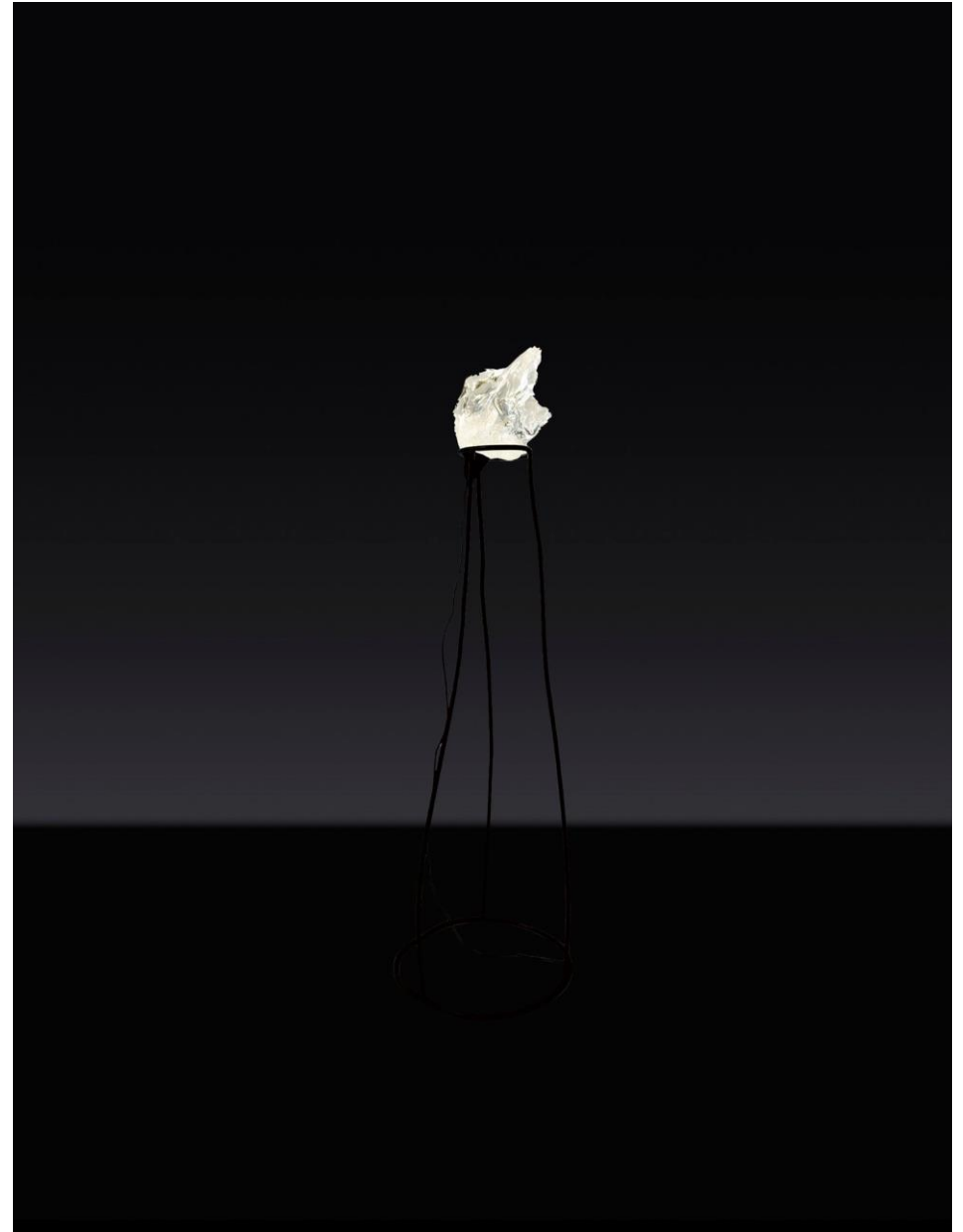
Size:

L460*W460*H1580mm

Material:

Glacier Crystal+Iron

Stones are like nature's spirits, ancient beings with a beautiful and melancholic charm that is profound, timeless, and understated. A spiritual stone is a condensed representation of mountains and rivers, containing within it a myriad of wonders. Through the incorporation of modern, lightweight, and transparent materials, merges with these stones, complementing their undulating surfaces and creating a refined and transcendent aesthetic.



LEAF LAMP

BDL001

Size:

L180*W120*H430mm

Material:

Acrylic+Brass

The work is inspired by nature's most common leaves.

Nature breeds life, and leaves symbolize life and hope.

This series of works takes leaves as the prototype for artistic re-creation, enlarges the natural form, shape and vein texture of leaves, and emphasizes the beauty of nature. With the participation of optical refraction and reflection effect, the charm of artistic creation is more obvious. The integration of art, fashion, nature and creativity makes the tension of life sublimated, meaning full of vitality and endless life.



EVER-THRIVING TABLE LAMP

BDL002

Size:

L410*W250*H785mm

Material:

Acrylic+Brass

The work is inspired by nature's most common leaves.

Nature breeds life, and leaves symbolize life and hope.

This series of works takes leaves as the prototype for artistic re-creation, enlarges the natural form, shape and vein texture of leaves, and emphasizes the beauty of nature. With the participation of optical refraction and reflection effect, the charm of artistic creation is more obvious. The integration of art, fashion, nature and creativity makes the tension of life sublimated, meaning full of vitality and endless life.



-CABINETS-

SCOTCH WHISKY CABINET

GSH001a

Size:

L:1640*W:540*H:1260mm

Material:

Brass+Leather

Whisky has a profound meaning in Scottish history and culture related to faith.

The shape of the wine cabinet is taken from the "Spirit Safe", an important component of the classic Scotch whisky distillation equipment that controls the flavor and mouthfeel of the new liquor.

Artist Cai Zhisong was invited to treat it artistically, and the counter added a representative deer sculpture element, with vintage leather and brass, which is very artistic and collectible.



SCOTCH WHISKY CABINET

GSH001b

Size:

L:1640*W:540*H:1260mm

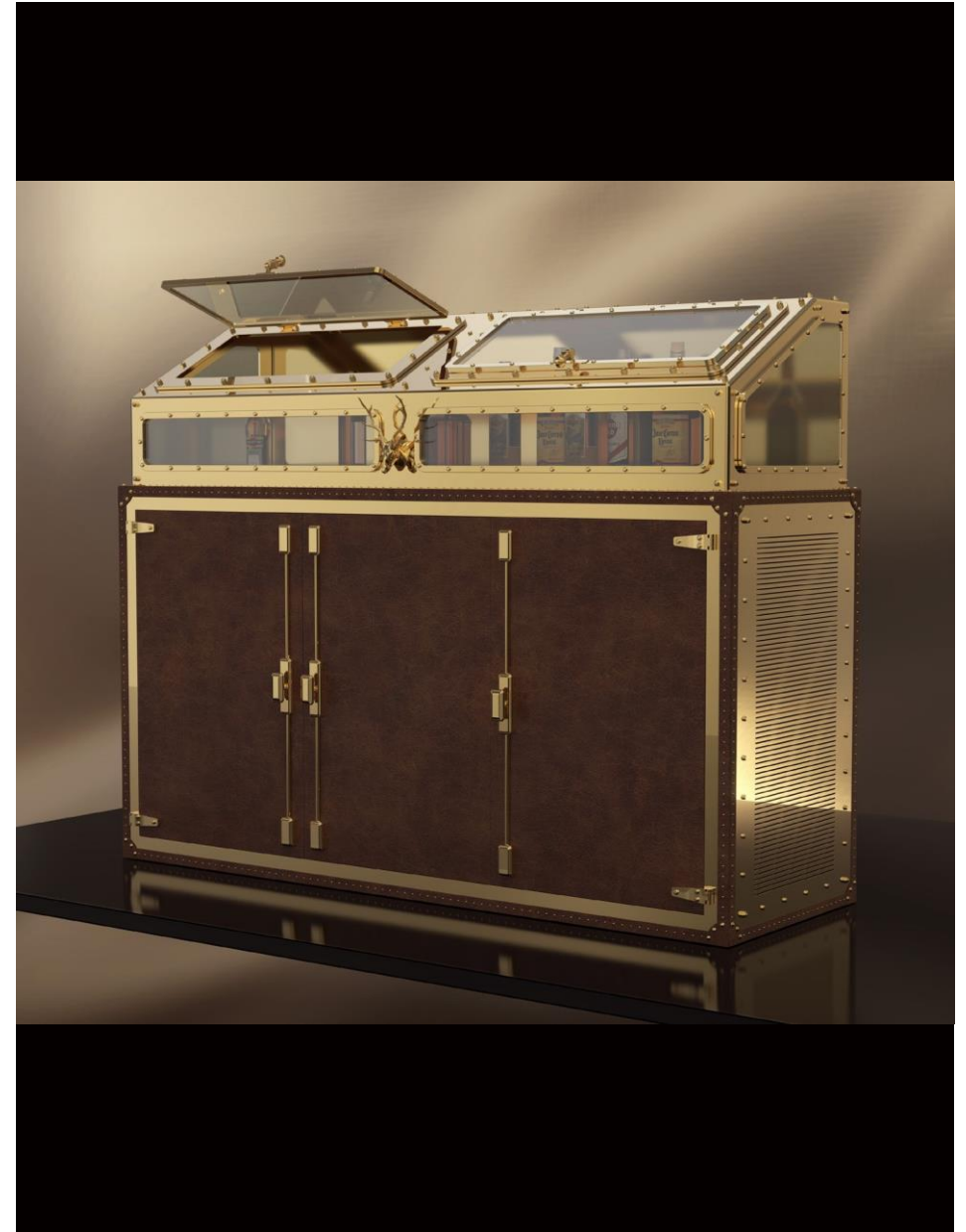
Material:

Stainless Steel+Leather

Whisky has a profound meaning in Scottish history and culture related to faith.

The shape of the wine cabinet is taken from the "Spirit Safe", an important component of the classic Scotch whisky distillation equipment that controls the flavor and mouthfeel of the new liquor.

Artist Cai Zhisong was invited to treat it artistically, and the counter added a representative deer sculpture element, with vintage leather and brass, which is very artistic and collectible.



HERMIT STONE CABINET

BSH003

Size:

L1420*W500*H1430mm

Material:

Glacier Crystal

The ancients believed that a heart stained with impurities cannot comprehend the fundamental essence of all things. This series draws inspiration from nature, taking cues from materials such as stones, wood grain, and withered branches and leaves. Through the use of transparent materials as the medium, this series imbues these natural elements with new life, liberating the soul and pursuing a state of tranquil clarity and spiritual transcendence.



-SCULPTURES-

BRAVE BRONCO

BDA001

Size:

L540*W300*H680mm

Material:

Glacier Crystal

Since ancient times, the Chinese nation has advocated the spirit of ceaselessly striving for self-improvement and forging ahead.

Being fearless and determined, the steed empowers us positively.



STATUE OF DEER (L)

BDA003a

Size:

L500*W320*H710mm

Material:

Glacier Crystal

Deers often appear among the immortal mountains, implicating longevity and auspiciousness.

A place with deer, good weather comes; a house with deer is a house with prosperity.

In Chinese, "deer" and "emolument" are both pronounced as "lu", meaning wealth and fortune.



UNICORN

BDA013

Size:

L330*W140*H320mm

Material:

Glacier Crystal

Nature has always been a wellspring of inspiration for artists. takes various natural images, such as rocks, branches, mountains, and animals, and reinterprets them through the artist's profound understanding of nature.



HORSE STATUE (L)

BDA014

Size:

L240*W150*H370mm

Material:

Glacier Crystal

The horse is the national spirit of continuous struggle, unceasing self-improvement, and upward progress advocated by the Chinese nation since ancient times. The horse is sonorous, fearless of hardship and danger, and tenacious and hardworking, which will bring a positive force to people.



TAIHU STONE V

BDT005

Size:

L520*W200*H500mm

Material:

Glacier Crystal

This work is derived from the literary allusion of Mi Fu worshipping stone. There has always been a cultural tradition of stone appreciation in China, which is a unique cultural accumulation of Chinese genes.

We hope to re-examine this exquisitely carved Taihu stone and take traditional culture colliding with contemporary art as a dialogue across time and space between ancient and modern times, and remind impetuous contemporary people to find their own humanistic spirit in Chinese traditional culture and philosophy.



TIME TRAVEL (S)

BDT021a

Size:

L700*W500*H1760mm

Material:

Glacier Crystal

This work is derived from the literary allusion of Mi Fu worshipping stone. There has always been a cultural tradition of stone appreciation in China, which is a unique cultural accumulation of Chinese genes.

We hope to re-examine this exquisitely carved Taihu stone and take traditional culture colliding with contemporary art as a dialogue across time and space between ancient and modern times, and remind impetuous contemporary people to find their own humanistic spirit in Chinese traditional culture and philosophy.



TAIHU STONE XIV

BDT022

Size:

L500*W520*H1700mm

Material:

Glacier Crystal

This work is derived from the literary allusion of Mi Fu worshipping stone. There has always been a cultural tradition of stone appreciation in China, which is a unique cultural accumulation of Chinese genes.

We hope to re-examine this exquisitely carved Taihu stone and take traditional culture colliding with contemporary art as a dialogue across time and space between ancient and modern times, and remind impetuous contemporary people to find their own humanistic spirit in Chinese traditional culture and philosophy.



FENGSHUI WATER I

BDN001a

Size:

L650*W650*H250mm

Material:

Glacier Crystal

In motion, flowing water highlights the relationship between existence and time. Time is fleeting. What if it can be static?

With the romantic mentality, we freeze time, being free and unfettered. Close to the vast nature, we enjoy views of mountains and rivers, returning to the spiritually rich world.



FENGSHUI WATER IV

BDN003

Size:

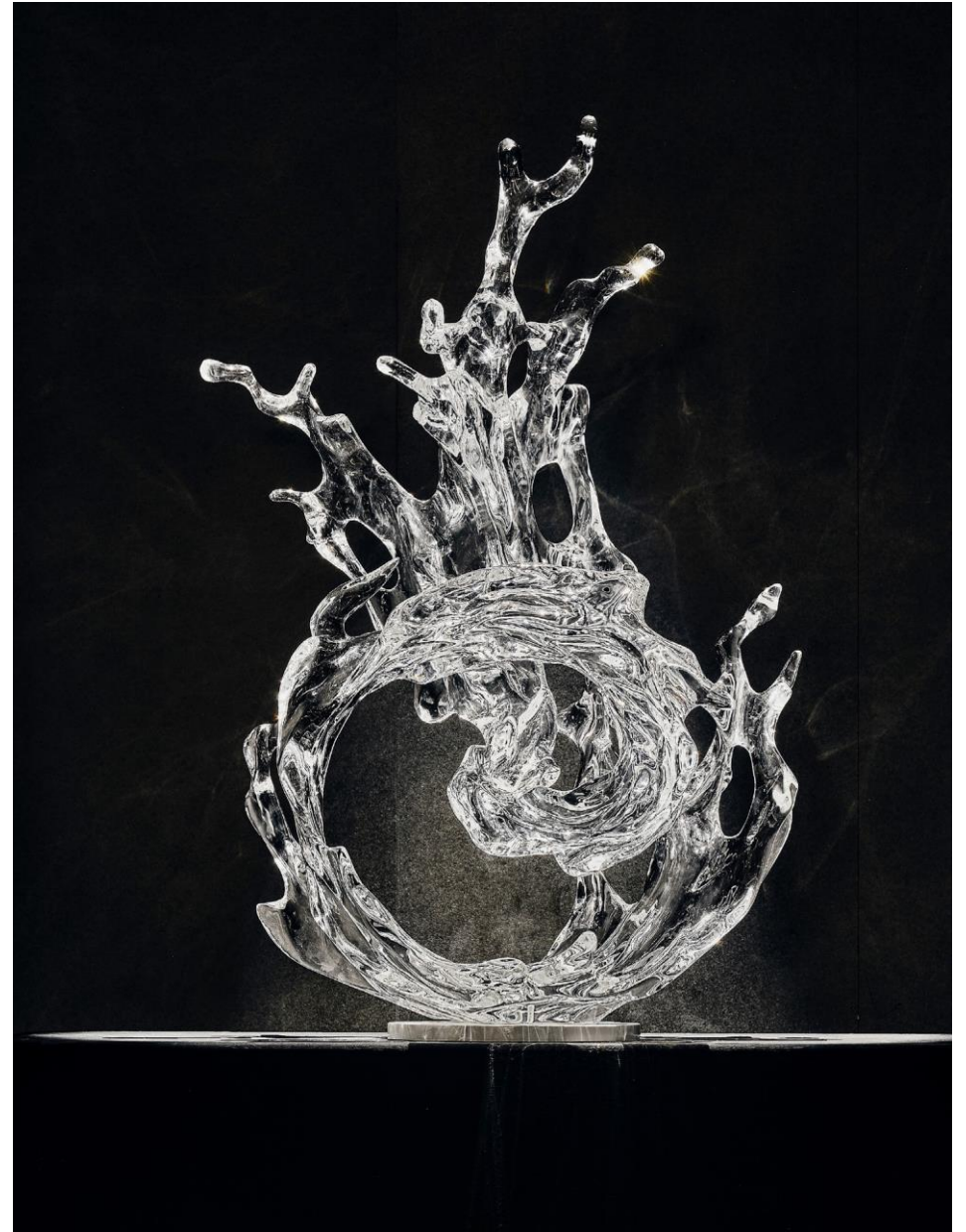
L700*W350*H1100mm

Material:

Glacier Crystal

Water benefits everything by giving without taking or contending. It likes the place others dislike, so it follows closely the divine law. The place should be low, the mind broad, the gifts kind, the speech trustworthy, the rule sound, the deed well-done, the action timely. Without contention, a man is blameless.

People are impermanent, the heart is not always wide. Great virtue is like water, and cares about the humanitarian state of mind, that is, the heart of the water.



SPLASH(S)

BDN004a

Size:

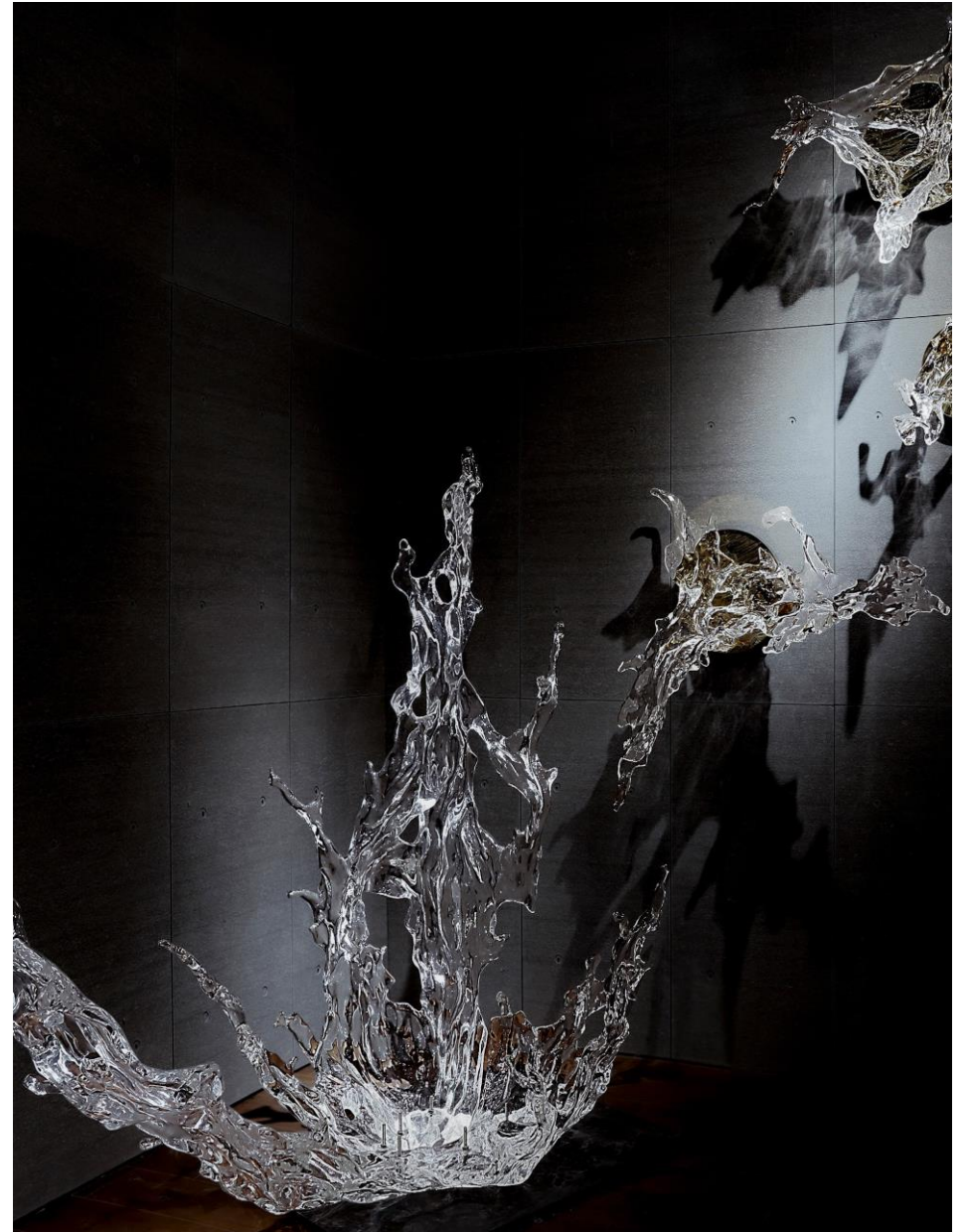
L1600*W900*H850mm

Material:

Glacier Crystal

Water benefits everything by giving without taking or contending. It likes the place others dislike, so it follows closely the divine law. The place should be low, the mind broad, the gifts kind, the speech trustworthy, the rule sound, the deed well-done, the action timely. Without contention, a man is blameless.

People are impermanent, the heart is not always wide. Great virtue is like water, and cares about the humanitarian state of mind, that is, the heart of the water.



WU JI I

BDN005a

Size:

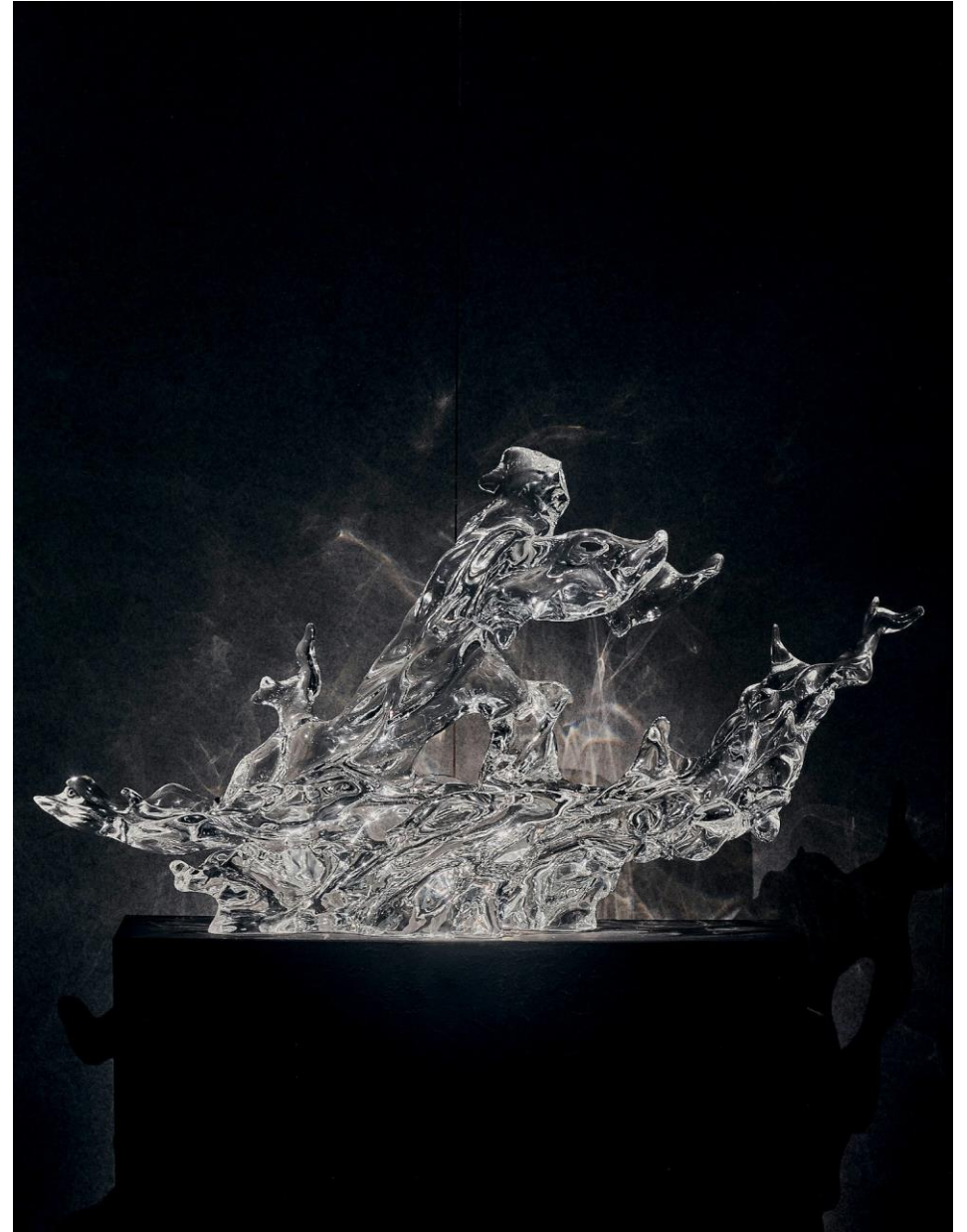
L1100*W400*H560mm

Material:

Glacier Crystal

This work is a complete sculpture created by transforming "water" into a Taiji-shaped figure. Water is the source of all things, symbolizing purity, resilience, and gentleness, and is also considered a symbol of good fortune in folk culture. The universe is born from Wuji (the state of non-being) and evolves into Taiji (the state of being), from which the two opposing forces of yin and yang emerge, leading to the creation of all things. Taiji symbolizes auspicious energy and good fortune.

The work seamlessly integrates the elements of water and Taiji, with a profound traditional cultural heritage and auspicious symbolism. At the same time, it exudes a heroic and romantic temperament.



WU JI II

BDN005b

Size:

L1250*W500*H870mm

Material:

Glacier Crystal

This work is a complete sculpture created by transforming "water" into a Taiji-shaped figure. Water is the source of all things, symbolizing purity, resilience, and gentleness, and is also considered a symbol of good fortune in folk culture. The universe is born from Wuji (the state of non-being) and evolves into Taiji (the state of being), from which the two opposing forces of yin and yang emerge, leading to the creation of all things. Taiji symbolizes auspicious energy and good fortune.

The work seamlessly integrates the elements of water and Taiji, with a profound traditional cultural heritage and auspicious symbolism. At the same time, it exudes a heroic and romantic temperament.



ROYAL DRAGON (S)

BDN006a

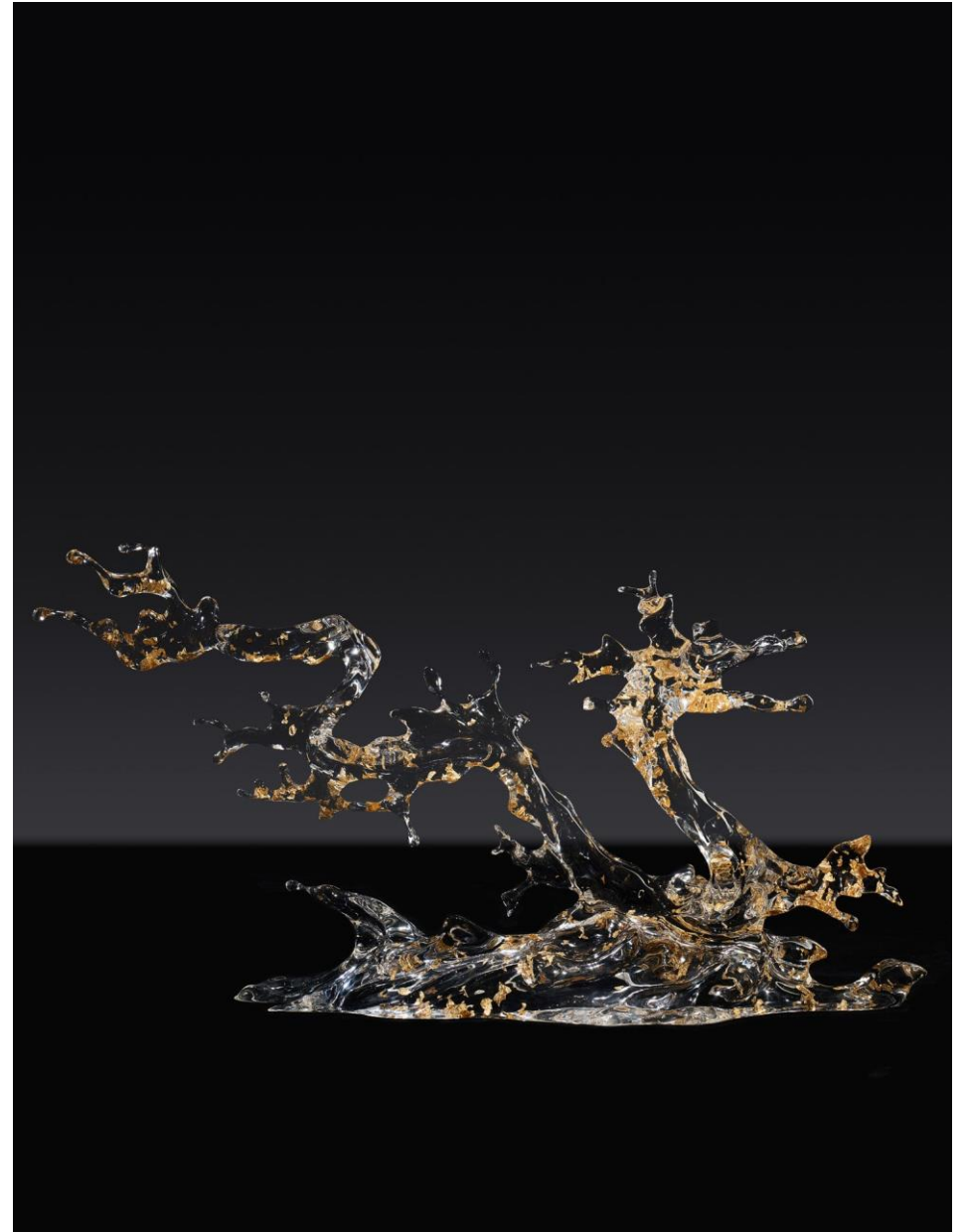
Size:

L1100*W250*H580mm

Material:

Glacier Crystal

The dragon symbolizes nobility and divinity, with lofty aspirations, capable of being both flexible and adaptable, and embracing boundless freedom. It embodies the auspicious meaning of punishing evil and protecting the country and its people. integrates traditional craftsmanship with modern aesthetic style, bringing their works to life with vivid realism and lifelike detail.



GREAT VIRTUE AS WATER (09#)

BDN007c

Size:

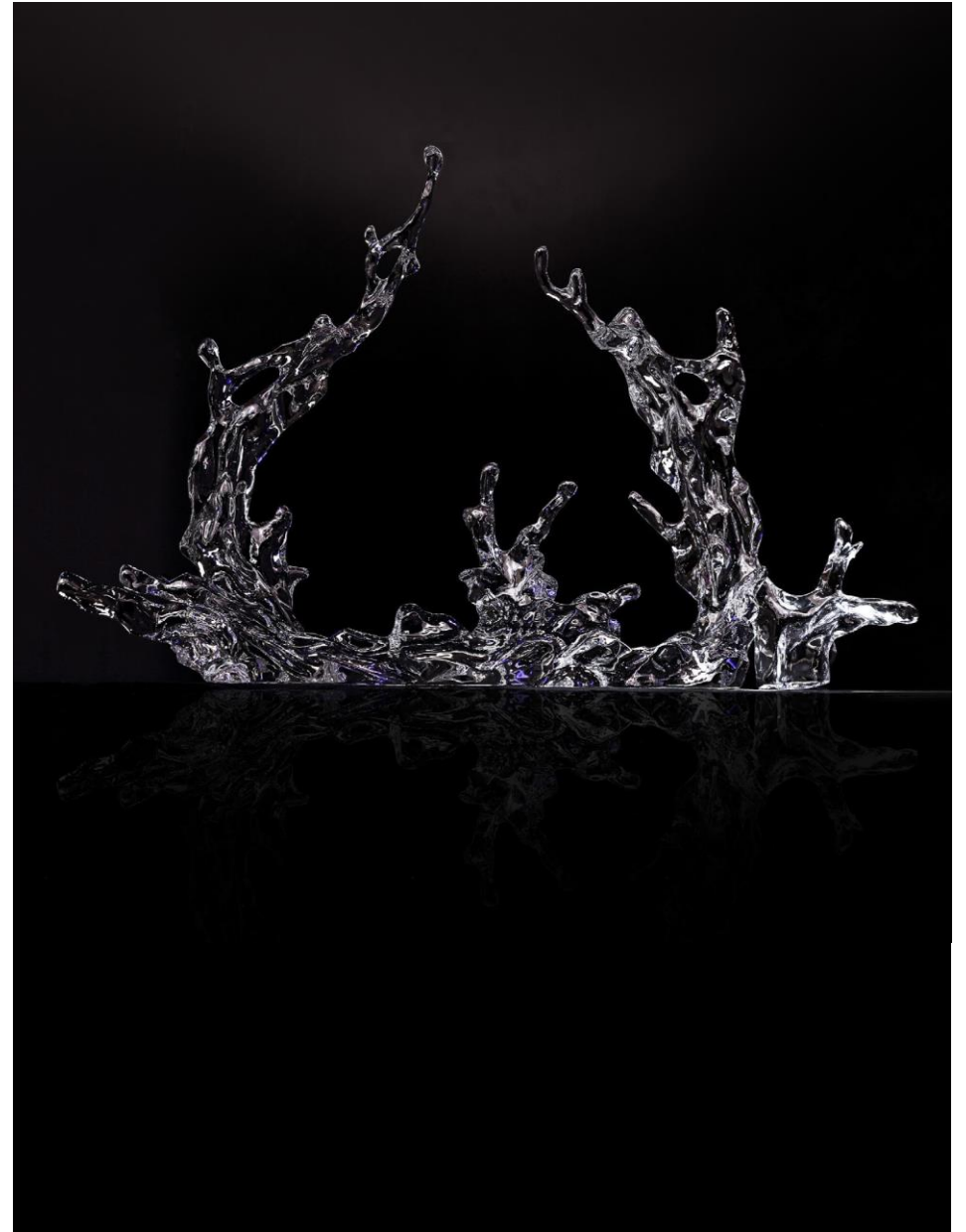
L1105*W250*H680mm

Material:

Glacier Crystal

Inspired by water, it comes from the eighth chapter of Tao Te Ching. Water benefits everything by giving without taking or contending. It likes the place others dislike, so it follows closely the divine law. The place should be low, the mind broad, the gifts kind, the speech trustworthy, the rule sound, the deed well-done, the action timely. Without contention, a man is blameless.

People are impermanent, the heart is not always wide. Great virtue is like water, and cares about the humanitarian state of mind, that is, the heart of the water. It combines the profound traditional culture and auspicious meaning, with a bold and unrestrained romantic temperament.



TIME TRAVEL (L)

BDT021b

Size:

L1300*W1000*H3200mm

Material:

Glacier Crystal

This work is derived from the literary allusion of Mi Fu worshipping stone. There has always been a cultural tradition of stone appreciation in China, which is a unique cultural accumulation of Chinese genes.

We hope to re-examine this exquisitely carved Taihu stone and take traditional culture colliding with contemporary art as a dialogue across time and space between ancient and modern times, and remind impetuous contemporary people to find their own humanistic spirit in Chinese traditional culture and philosophy.



ROYAL DRAGON (L)

BDN006b

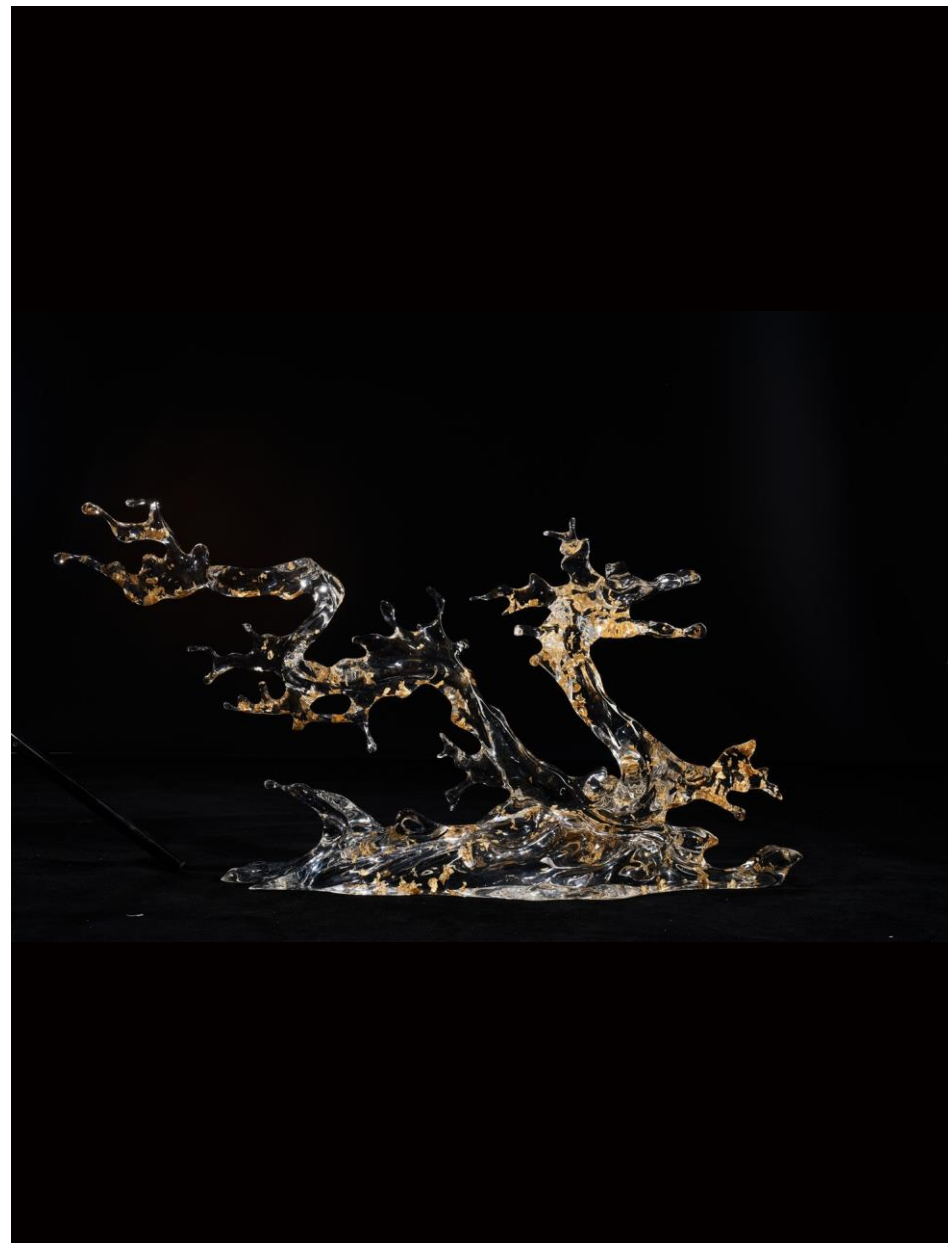
Size:

L2700*W660*H1350mm

Material:

Glacier Crystal

The dragon symbolizes nobility and divinity, with lofty aspirations, capable of being both flexible and adaptable, and embracing boundless freedom. It embodies the auspicious meaning of punishing evil and protecting the country and its people. integrates traditional craftsmanship with modern aesthetic style, bringing their works to life with vivid realism and lifelike detail.



GREAT VIRTUE AS WATER

(07#)

BDN007a

Size:

L2450*W500*H1180mm

Material:

Glacier Crystal

Inspired by water, it comes from the eighth chapter of Tao Te Ching. Water benefits everything by giving without taking or contending. It likes the place others dislike, so it follows closely the divine law. The place should be low, the mind broad, the gifts kind, the speech trustworthy, the rule sound, the deed well-done, the action timely. Without contention, a man is blameless.

People are impermanent, the heart is not always wide. Great virtue is like water, and cares about the humanitarian state of mind, that is, the heart of the water. It combines the profound traditional culture and auspicious meaning, with a bold and unrestrained romantic temperament.



WATERFALL

BDN008

Size:

L800*W700*H2900mm

Material:

Glacier Crystal

Water benefits everything by giving without taking or contending. It likes the place others dislike, so it follows closely the divine law. The place should be low, the mind broad, the gifts kind, the speech trustworthy, the rule sound, the deed well-done, the action timely. Without contention, a man is blameless.

People are impermanent, the heart is not always wide. Great virtue is like water, and cares about the humanitarian state of mind, that is, the heart of the water.



SPLASH(L)

BDN004b

Size:

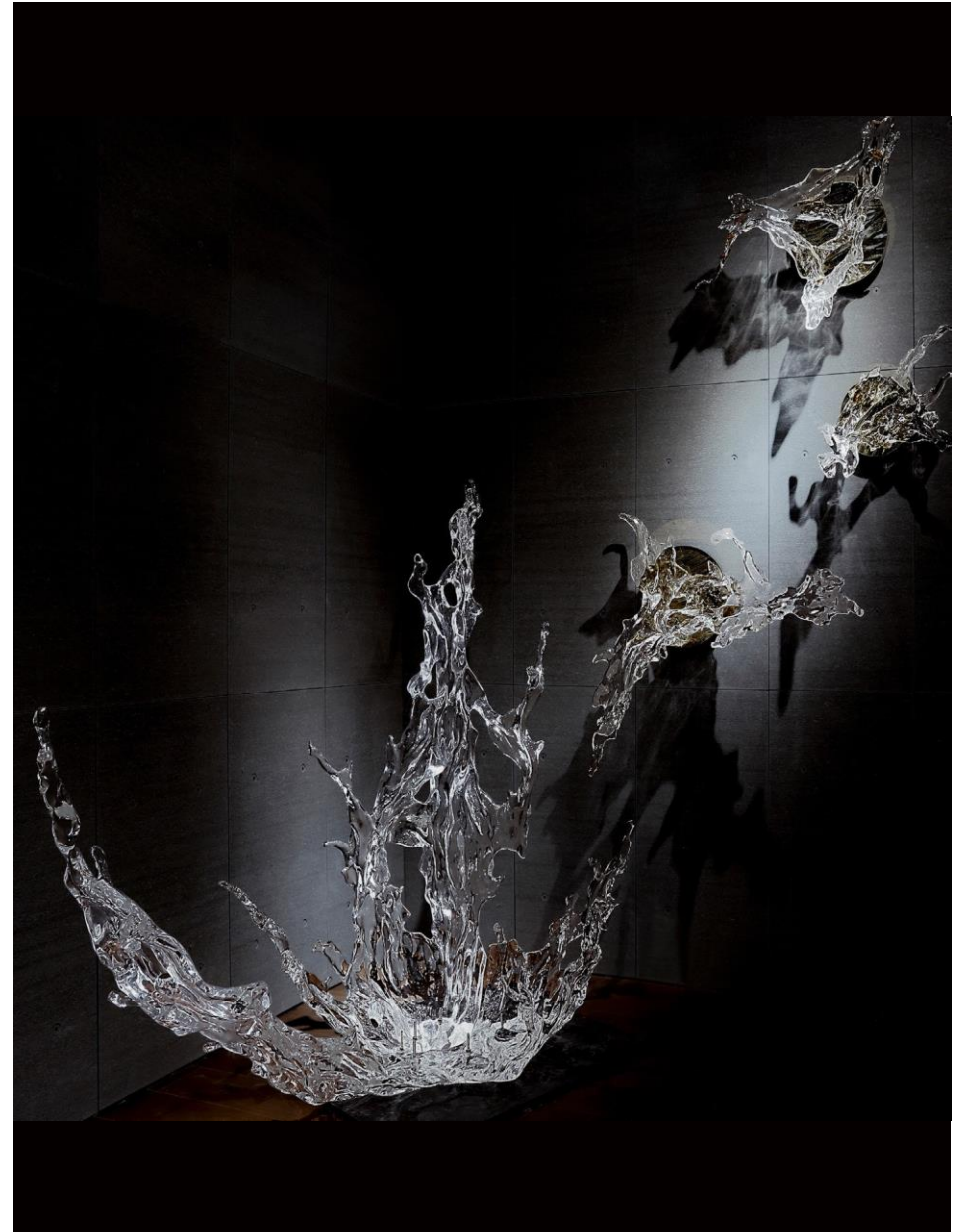
L2500*W1420*H2100mm

Material:

Glacier Crystal

Water benefits everything by giving without taking or contending. It likes the place others dislike, so it follows closely the divine law. The place should be low, the mind broad, the gifts kind, the speech trustworthy, the rule sound, the deed well-done, the action timely. Without contention, a man is blameless.

People are impermanent, the heart is not always wide. Great virtue is like water, and cares about the humanitarian state of mind, that is, the heart of the water.



GREAT VIRTUE AS WATER (L)

BHO011

Size:

L4000*W1300*H1000mm

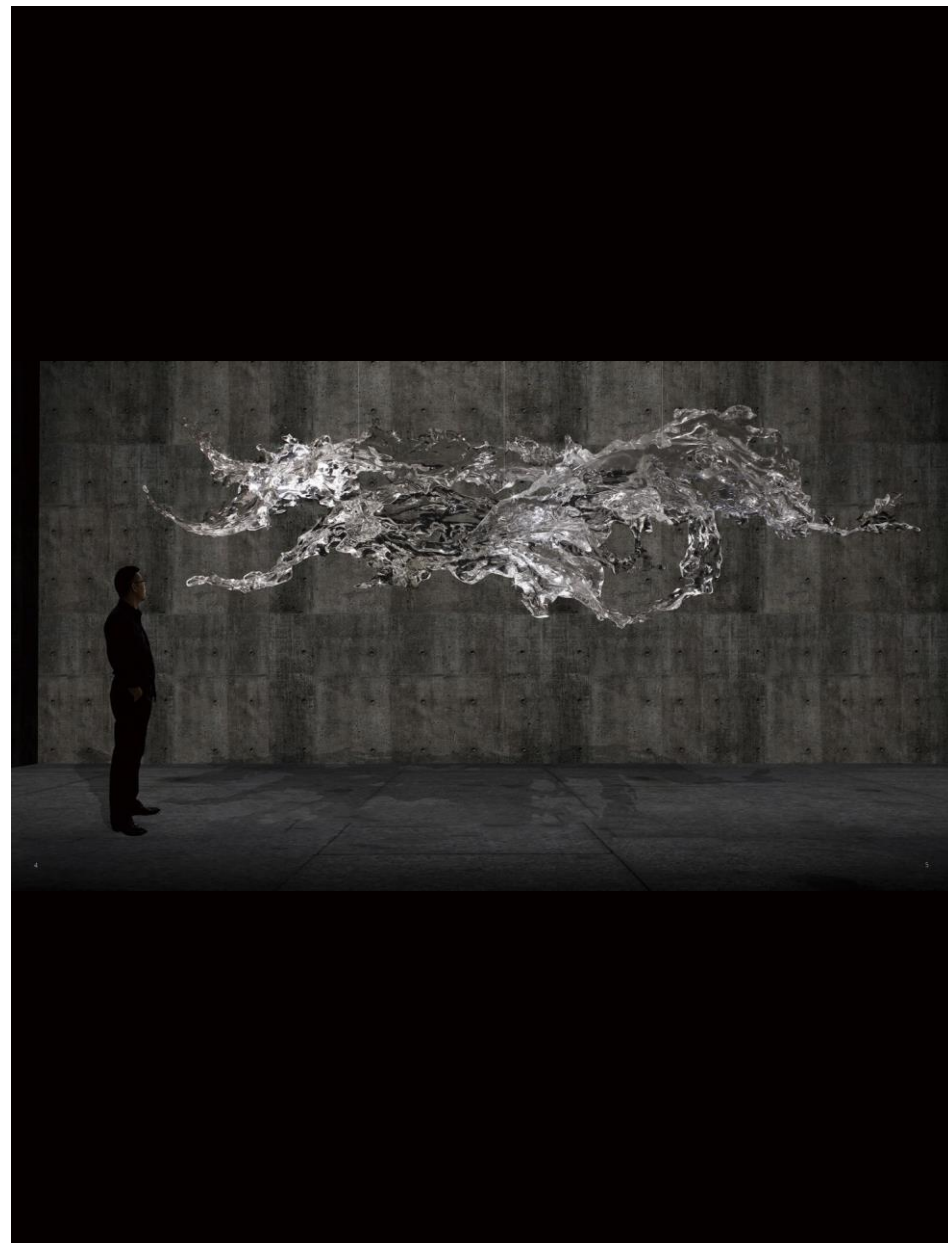
Material:

Glacier Crystal

The large-scale aerial art installation "Great Virtue as Water" is a graceful artwork created by artist Wu Daijie in the spirit of craftsmen, integrating contemporary high-tech creation.

The artist's inspiration comes from Laozi's Tao Te Ching, a classic of Oriental philosophy: "Water benefits everything by giving without taking or contending. This is a humble virtue. This means that the conduct of the best, like water, can nourish and benefit all things, but not compete with all things for anything.

This artwork, with great tension of grand momentum and bright visual effects, stimulates people's thinking about reality, human nature.



RIPPLE BATHTUB

BBT001

Size:

L2800*W1400*H750mm

Material:

Glacier Crystal

“Mountains thrive because of water, and water flatters mountains”. Inspired by the water basins in mountain streams and valleys, the artist has created the 'Between Mountains and Waters' bathtub, full of creativity, using transparent new materials combined with ergonomic design, as if wading upstream in a valley and immersing oneself in nature.



JADE POOL BATHTUB

BBT002

Size:

L1980*W860*H620mm

Material:

Glacier Crystal

Yaochi, the bathing place of the Queen Mother of the West in ancient Chinese mythology, is a place of pure and crystal-clear water, with waves as beautiful as jade. Yaochi Bathroom draws inspiration from this mythological place and uses the traditional Chinese artistic pattern of water ripples as its creative decorative element. Whether in terms of cultural significance or visual expression, it embodies rich historical heritage.



DRIFTING BOWL I

BPL005

Size:

L970*W350*H100mm

Material:

Glacier Crystal

Nature has always been a source of inspiration for artists. Artist recreates through the artist's deep understanding of nature through the intentions of natural objects: rocks, branches, mountains, animals, etc.



DRIFTING BOWL II

BPL006

Size:

L720*W250*H130mm

Material:

Glacier Crystal

Nature has always been a source of inspiration for artists. Artist recreates through the artist's deep understanding of nature through the intentions of natural objects: rocks, branches, mountains, animals, etc.



DRIFTING BOWL III

BPL007

Size:

L560*W190*H80mm

Material:

Glacier Crystal

Nature has always been a source of inspiration for artists. Artist recreates through the artist's deep understanding of nature through the intentions of natural objects: rocks, branches, mountains, animals, etc.



HORSE WINE RACK

BBA001

Size:

L200*W140*H300mm

Material:

Glacier Crystal

The horse is the national spirit of continuous struggle, unceasing self-improvement, and upward progress advocated by the Chinese nation since ancient times. The horse is sonorous, fearless of hardship and danger, and tenacious and hardworking, which will bring a positive force to people.

